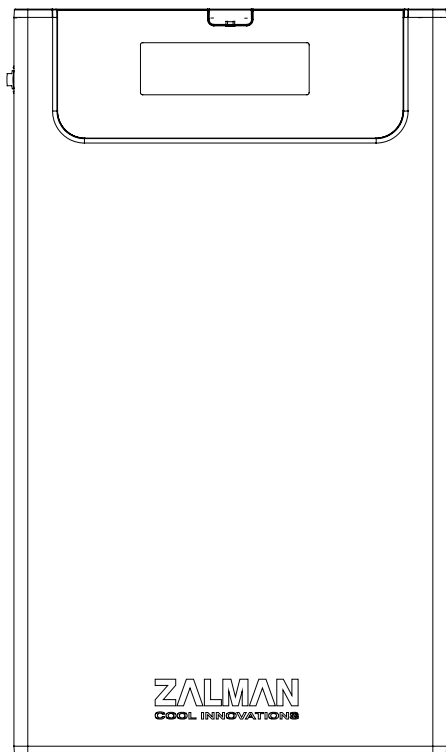


Quick Guide

ZM-VE300



Please read this Manual before use

1. Precautions

- We are not responsible for any damages due to improper use, except installation error or normal use.
- Product design and specifications may be revised to improve quality and performance.
- Avoid inserting objects into the device.
- Keep device away from heat sources, direct sunlight, oil, and humid environment.
- Do not let the device be wet. It may not be covered by Warranty.
- It may have problem if used near magnetic objects.
- Exterior damage during use is not covered by Warranty.
- Do not turn on / off PC while device is connected to PC. It may cause device disorder or error.

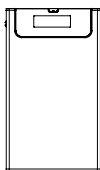
2. Specifications

Case Material	Aluminum Alloy, Acryl, Poly Carbonate
Weight	96g
Dimensions	135.3(L) x 78.6(W) x 13.1(H)mm
Interface	USB 3.0

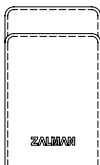
3. System Requirements

- CPU: Intel Pentium / 350 MHz or above compatible CPU
- OS: Windows 2000/XP/vista/7, Linux 2.6 or later, Mac OS X 10.0 or later

4. Components



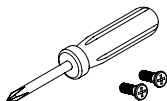
ZM-VE30



Pouch



Quick Guide



Screw Drive & Bolts 2pcs



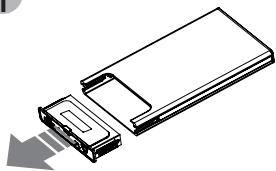
USB 3.0 Cable



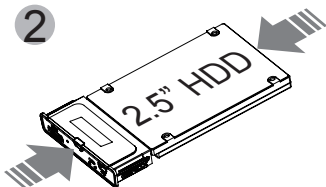
Install CD

5. Mounting a 2.5" HDD

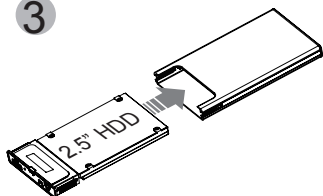
1



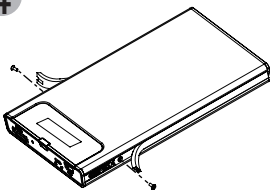
2



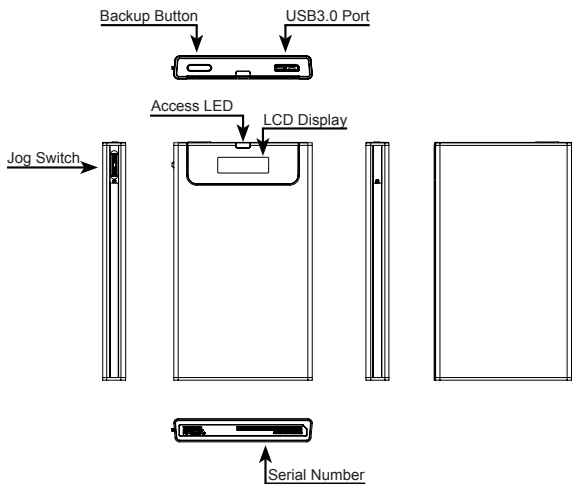
3



4

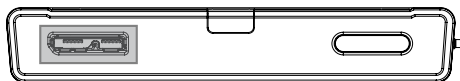


6. Names of Parts



7. Connecting to PC

Connect device to PC's USB3.0 port using enclosed USB3.0 cable. When disconnecting, please use "Hardware Safety Removal" on tray.



8. Display and Icon

List display



- Write Protected
- Dual Mode
- ODD Mode
- iso File Mounted to Virtual CD
- Connect Virtual HDD

Menu display

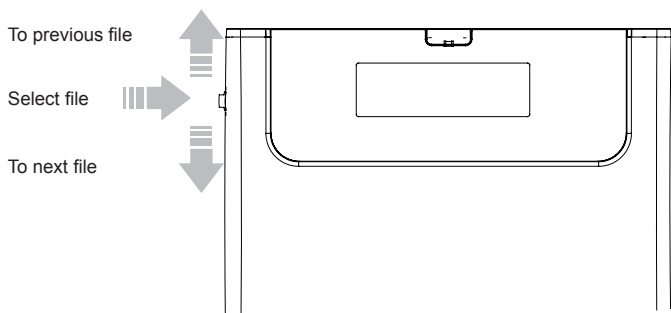


- Read & Write Enabled
- HDD Mode
- Sleep Mode
- USB2.0 or USB3.0 PC connection status

9. Write Protect On / Off

- Write Protect is on when connect PC with backup button pressed.
- Otherwise, Write Protect is off.

10. Using Jog Switch



11. Menu Description

- To use Virtual ODD, iso file must be located in the “_iso” folder of device.
- Enter into or free from menu if Jog switch is pressed for 3seconds.
- If backup button is pressed on Menu, it moves to 1 upper layer.
 - Except Menu, Backup button is used for its original function, Data Backup.
- External HDD or CD-ROM may not be recognized according to current mode states.

(1) Main Menu

Mode Select	>	Device Mode setting
Setting	>	Setting LCD brightness or Sleep Mode time
Information	>	Check HDD information and firmware information
USB Connect	>	Setting USB connection
Advanced	>	Setting Virtual HDD mounting
Exit	←	Menu Exit

(2) Mode Select (“v”is shown in selected mode)

Dual Mode	←	Both of external HDD and CD-ROM are recognized
ODD Mode	←	ExternalCD-ROM is recognized. (Useful when OS installing)
HDD Mode	←	External HDD is recognized. (Useful when connecting other devices except PC)

(3) Setting

LCD Bright	>	AdjustLCD backlight brightness
Idle Bright	>	Adjust LCD backlight brightness in Sleep Mode
Standby time	>	Sleep Mode time setting
Load Default	←	Return to default value

(4) Information

S.M.A.R.T	>	Hard disk SMART information
HDD Model	>	Display Hard disk model name
HDD Serial	>	Display Hard disk serial number
Firmware Ver.	>	Display device firmware version
USB Speed	>	Display current PC connection (USB2.0: Hi-speed, USB3.0: Super-speed)
USB Input Volt	>	Display the lowest Power Current (V) from USB port after connecting with PC Display current Power Current (V)

(5) S.M.A.R.T

HDD Temp.	>	Display HDD temperature
HDD Health	>	Display HDD health info (Good, Warning, Bad) - If Warning or Bad is shown, please check HDD carefully after backup date.

(6) USB Connect

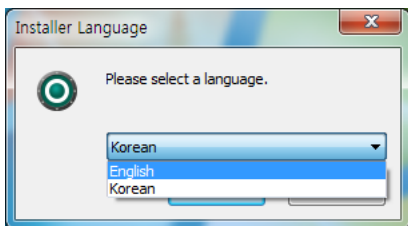
Refresh	↶	Refreshing device from PC
Safe Removal	↶	Safely removing from PC

(7) Advanced

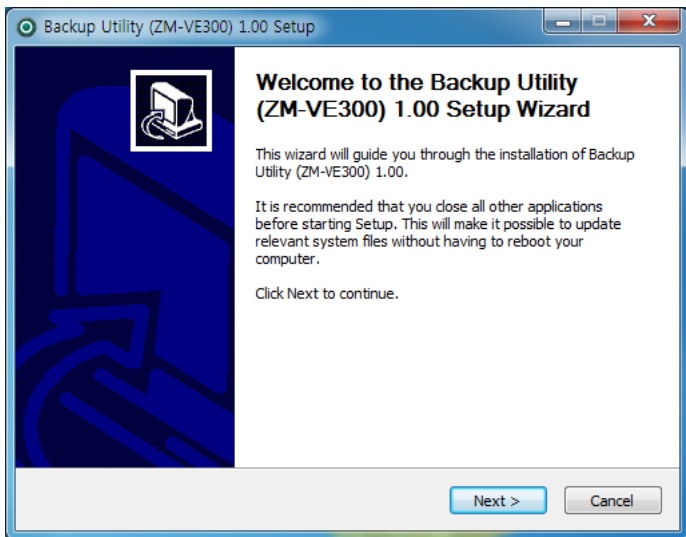
Umount VHDD	↶	Disable Virtual HDD function
Write Protect	<input checked="" type="checkbox"/>	Write Protect for ZM-VE300

12. Software install

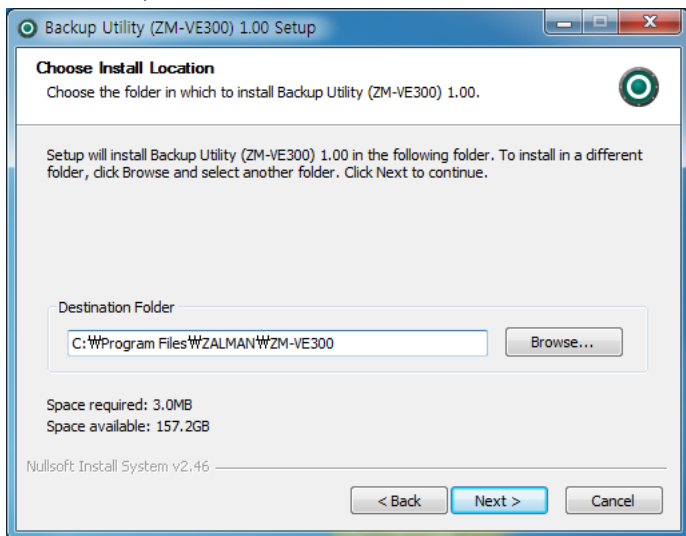
1. Please select Installer language



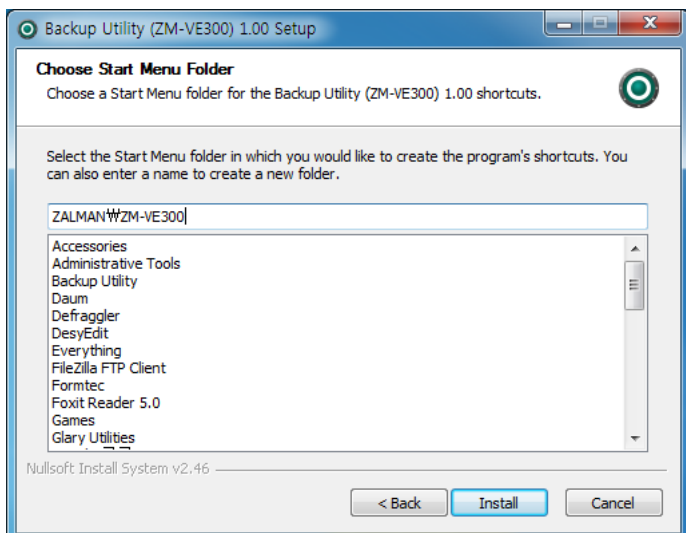
2. Please click Next button



3. Please select path to install



4. Please select start menu folder



5. After checking Run automatically, click the Finish button.

