

# English

◆ Please read this manual thoroughly before installation.

**E-mail: [zalman@zalman.co.kr](mailto:zalman@zalman.co.kr)**

## ▣ Contents

1. Cautions
2. Components
3. System Requirements
4. Specifications
5. Driver Installation
6. Button Functions
7. FPSGUN™ Settings
8. Gripping
9. Useful Methods
10. Trademarks and Copyright Notice

Gun Type Interface for FPS Gaming

FPSGUN™ FG1000






## 1. Cautions

- ① Using the product in an improper posture for a long period may result in fatigue or soreness.
- ② Use and store the product free from exposure to liquids and humidity. Must be operated within a temperature range of 0°C(32°F) ~ 40°C(104°F).
- ③ Do not attempt to disassemble or alter the product for repair.
- ④ Check the components list and condition of the product before installation. If any problem is found, contact the place of purchase to obtain a replacement/refund.

※ Certain old motherboard models that were released when USB ports were first implemented on the PC may have a low USB transmission rate, which could cause malfunctioning. Using on a PC with a very low electrical capacity (power consumption of 150 watts or lower) could generate malfunctioning as well.

## 2. Components

		
<p>FPSGUN™</p>	<p>Installation CD (Driver, Utilities, User's Manual)</p>	<p>Quick Installation Guide</p>

## 3. System Requirements

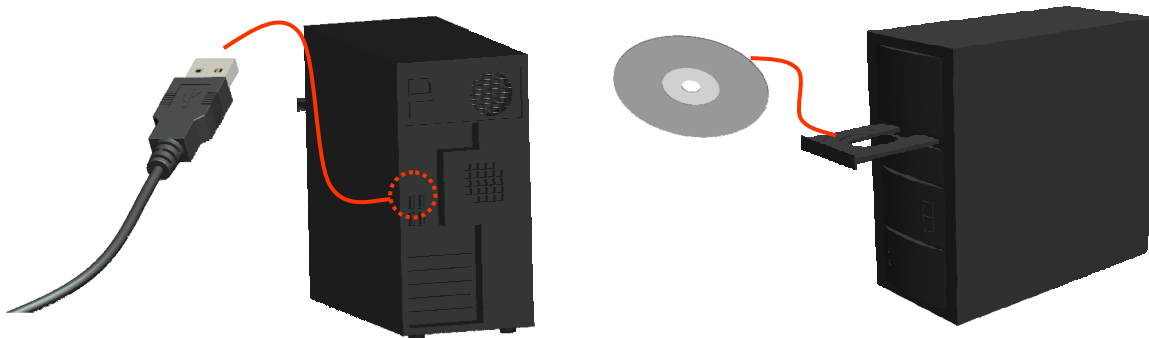
- ① Microsoft Windows 2000, XP, Vista(32bit)
- ② USB Port
- ③ CD-ROM Drive

## 4. Specifications

Tracking Resolution	<ul style="list-style-type: none"> <li>- Programmable up to 2000 dpi</li> <li>- Default Presets - 1600/800/400 dpi</li> </ul>
Image Processing	6400 fps (frames / second)
Maximum Acceleration	15 g
Maximum Speed	40 ips (inches / second)
USB Data Format	16 bit
USB Report Rate	1000 Hz
Weight	6.38 oz (181 g)
Dimensions	169 x 75 x 85 mm (L x W x H)

### 5. Driver Installation

- ① Connect the mouse to the USB port of the desktop or laptop PC.
- ② Insert the Installation CD into the CD-ROM and proceed with the driver installation according to the on-screen instructions.



NOTES )

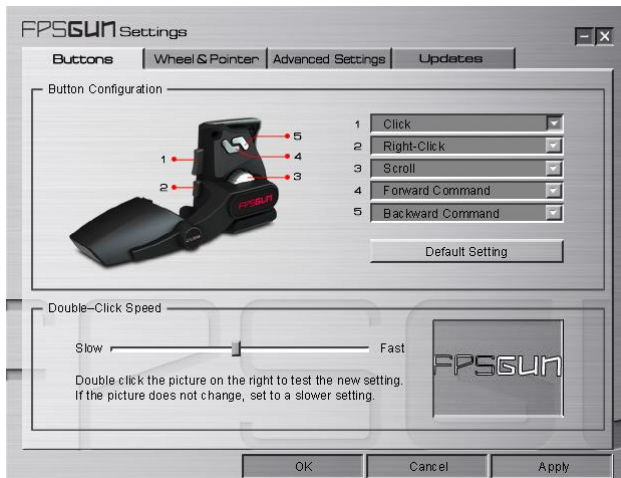
- ① You can also download the latest driver for installation from Zalman’s website ([www.zalman.co.kr](http://www.zalman.co.kr)).
- ② If the mouse does not operate, try reconnecting the USB cable or try rebooting the computer.

### 6. Button Functions



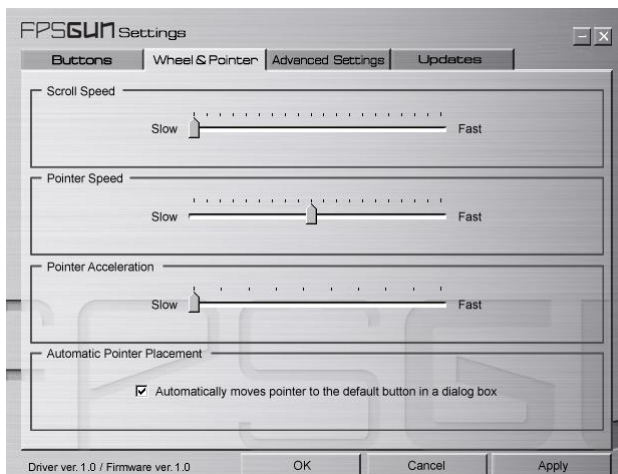
- ① Left Click
- ② Right - Click
- ③ Scroll Wheel & Button
- ④ Next Window Screen
- ⑤ Previous Window Screen
- ⑥ DPI Control
- ※ Buttons 1~5 : Programmable
- Button 6 : Hardwired DPI Control

## 7. FPSGUN™ Settings



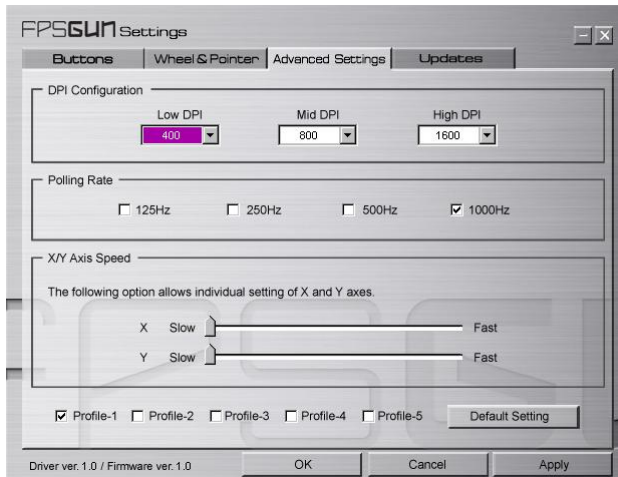
### ① Buttons

- Button Configuration : Sets the functions of the 5 programmable buttons.
- Double-Click Speed : Sets the Double-Click Speed.



### ② Wheel & Pointer

- Scroll Speed : Sets the Scroll Speed.
- Pointer Speed : Sets the Pointer Speed.
- Pointer Acceleration : Sets the Pointer Acceleration.
- Automatic Pointer Placement : Enables/disables automatic placement of the cursor on an activate window.



### ③ Advanced Settings

- DPI Configuration : Sets the tracking resolution (DPI).
- ※ Current DPI setting is indicated by the Scroll Wheel's illuminated colors as follows.
  - Low DPI : 400, 600DPI (violet)
  - Mid DPI : 800, 1000, 1200DPI (blue)
  - High DPI : 1400, 1600, 2000DPI (red)
- Polling Rate : Sets the response rate between the OS and FPSGUN™.
- X/Y Axis Speed : The pointer speeds of X and Y axes can be adjusted separately.
- Profile : The DPI and Polling Rate can be set by the user and stored as a profile.

### ④ Updates

- Clicking on the "Updates" will take you to [http://www.zalman.co.kr/support/fpsgun\\_update/FG1000.htm](http://www.zalman.co.kr/support/fpsgun_update/FG1000.htm)

## 8. Gripping

### ① Hold the mouse as demonstrated in the picture.

Make sure to place the little finger on the location shown in the pictures.



### 9. Useful Methods

A. The wrist can be used as the pivoting point and rotated to allow faster movements.



Correct (O)



Incorrect (X)

B. Using the DPI Control Button for Game Play

- Increase the DPI value for characters that require quick movements.
- Decrease the DPI value for characters that require precise movements.



#### Advanced Tip)

##### Quick Stop

Tilting the grip to the left/right after dragging the mouse to the left/right facilitates Quick Stop.





## 10. Trademarks and Copyright Notice

◆ All trademarks mentioned in this manual are properties of their respective owners, and the use of these trademarks without the permission of their respective owners is prohibited.

- FPSGUN™ is a registered trademark.
- Windows XP and Windows Vista are registered trademarks of Microsoft Corporation.

© 2007 by Zalman Tech Co., Ltd.

Copying and printing of this user's manual without the approval of Zalman Tech Co., Ltd. is prohibited.