

**2024 STREET IMPROVEMENTS PROJECT
NEVADA, IOWA**

BID DATE: WEDNESDAY, February 7, 2024 @ 1:00 P.M.

**PLACE FOR CONTRACTORS
TO SUBMIT BIDS**

Nevada City Hall
Attn: City Clerk
1209 6th Street
Nevada, IA 50201

ADDENDUM NO.1
January 29, 2024

TO ALL PLANHOLDERS:

The following changes, clarifications, additions, and/or deletions are hereby made a part of the contract documents for the above-referenced project, as fully and completely as if the same were fully set forth therein. All Bidders submitting a Bid on the above Contract shall carefully read this Addendum and give it consideration in the preparation of their Bid.

This Addendum No. 1 consists of the following:

- Addendum No. 1 pages ADN1-1 through ADN1-2
- Proposal – Addendum 1 (6 pages)
- Contract – Addendum 1 (9 pages)
- Plan Sheets (10 pages)

CLARIFICATIONS

1. Sidewalks and carriage walks shall all be 4” unless they are located through a driveway/ alley or identified as a ramp. All ramps and sidewalks through driveways/ alleys are 6”.
2. Insertion valves are to be used as needed for installation of new water main pipe if existing pipe is unable to be isolated using existing valves. Existing pipe sizes in the area vary from 4”-10”.
3. All 4” sanitary sewer is now classified as sewer service rather than sewer main.


SPECIFICATIONS

1. **REFER TO PROPOSAL (6 PAGES)**
 - a. **REPLACE** PROPOSAL pages with PROPOSAL-ADDENDUM #1 pages attached to this addendum. Highlighted items have been changed or added.
2. **REFER TO CONTRACT (9 PAGES)**
 - a. **REPLACE** CONTRACT pages with CONTRACT-ADDENDUM #1 pages attached to this addendum. Highlighted items have been changed or added.

PLANS

1. **REFER TO PLAN SHEETS (10 PAGES)**
 - a. **REPLACE** Sheets C.01-C.02 with the attached – Remove bid items for 4” sanitary sewer main and add insertion valve bid items; Adjust quantities as noted; Adjust bid item numbers.
 - b. **REPLACE** Sheets C.03-C.04 with the attached – Revisions to bid item notes as indicated; Adjust bid item numbers.
 - c. **REPLACE** Sheet C.05 with the attached – Revisions to bid item notes as indicated; Adjust bid item number; Tabulations 110-8, 110-5, and 110-1 revised.
 - d. **REPLACE** Sheet C.11 with the attached – Tabulations HRG-1 and HRG-9 revised.
 - e. **REPLACE** Sheet C.12 with the attached – Tabulation HRG-30 revised.
 - f. **REPLACE** Sheet MSA.01 with the attached – Sanitary sewer labels updated as indicated.
 - g. **REPLACE** Sheet MSA.02 with the attached – Sanitary sewer labels updated as indicated.
 - h. **REPLACE** Sheet MWM.03 with the attached – Water service updated as indicated.

All bidders shall acknowledge receipt and acceptance of Addendum No. 1 by signing in the space provided on the Bid Form. Bids submitted without Addendum No. 1 being acknowledged will be considered non-responsive.

	I hereby certify that this engineering document was prepared by me or under my direct personal supervision and that I am a duly licensed Professional Engineer under the laws of the State of Iowa.
	<p style="text-align: right;">Date: 01/29/24</p> <p>BRANDON L. MICKELSON, P.E.</p> <p>License No. 2442528</p> <p>My renewal date is December 31, 2025.</p> <p>Pages or sheets covered by this seal: Addendum #1</p>

BRANDON MICKELSON, PE
HR GREEN, INC.
8710 EARHART LANE
CEDAR RAPIDS, IOWA 52404
PHONE: (319) 841-4144
Brandon.mickelson@hrgreen.com

END OF ADDENDUM #1

**PROPOSAL
2024 STREET IMPROVEMENTS
NEVADA, IOWA**

PROPOSAL ATTACHMENT: PART C – BID ITEMS, QUANTITIES AND PRICES

This is a UNIT BID PRICE CONTRACT. The bidder must provide the Unit Bid Price, the Total Bid Price, and the Total Construction Cost; in case of discrepancy, the Unit Bid Price governs. The quantities shown on the Proposal Attachment: Part C – Bid Items, Quantities and Prices are approximately only, but are considered sufficiently adequate for the purpose of comparing bids. The Jurisdiction shall only use the Total Construction Cost for comparison of bids.

The Bidder understands that they may submit a bid for one or both options. The Bidder also understands that the lowest bid between the two options will be awarded.

ITEM NO.	ITEM	UNIT	QUANTITY	UNIT PRICE	TOTAL
OPTION A - PCC					
A-1	TOPSOIL OFF-SITE	CY	1209		
A-2	EXCAVATION, CLASS 13	CY	2565		
A-3	SUBGRADE PREPARATION	SY	6880		
A-4	SUBGRADE TREATMENT, GEOGRID	SY	6880		
A-5	SUBBASE, MODIFIED 6"	SY	6880		
A-6	COMPACTION TESTING	LS	1		
A-7	EXPLORATORY EXCAVATION	HR	32		
A-8	TRENCH COMPACTION TESTING	LS	1		
9	SANITARY SEWER GRAVITY MAIN, TRENCHED, PVC, 4"	LF	54		
A-9	SANITARY SEWER GRAVITY MAIN, TRENCHED, PVC, 10"	LF	799		
A-10	SANITARY SEWER SERVICE STUB, PVC, 4"	LF	450		
A-11	SANITARY SEWER SERVICE STUB, PVC, 6"	LF	450		
13	REMOVAL OF SANITARY SEWER, VCP, 4"	LF	54		
A-12	REMOVAL OF SANITARY SEWER, VCP, 10"	LF	798		
A-13	STORM SEWER, TRENCHED, PVC, 8"	LF	64		
A-14	STORM SEWER, TRENCHED, PVC, 12"	LF	24		
A-15	STORM SEWER, TRENCHED, RCP, 15"	LF	608		
A-16	STORM SEWER, TRENCHED, RCP, 18"	LF	384		
A-17	STORM SEWER, TRENCHED, RCP, 24"	LF	520		
A-18	STORM SEWER, TRENCHED, RCP, 30"	LF	64		
A-19	REMOVAL OF STORM SEWER, PVC, 6"	LF	26		
A-20	REMOVAL OF STORM SEWER, PVC, 8"	LF	16		
A-21	REMOVAL OF STORM SEWER, VCP, 8"	LF	106		

ITEM NO.	ITEM	UNIT	QUANTITY	UNIT PRICE	TOTAL
A-22	REMOVAL OF STORM SEWER, VCP, 10"	LF	210		
A-23	REMOVAL OF STORM SEWER, VCP, 12"	LF	377		
A-24	REMOVAL OF STORM SEWER, RCP, 15"	LF	82		
A-25	REMOVAL OF STORM SEWER, VCP, 18"	LF	176		
A-26	STORM SEWER ABANDONMENT, FILL AND PLUG	LF	175		
A-27	SUBDRAIN, TYPE 1, PVC, 6"	LF	1691		
A-28	FOOTING DRAIN COLLECTOR, PERFORATED PVC, 8"	LF	232		
A-29	SUBDRAIN CLEANOUT, TYPE A-1, PVC, 6"	EA	8		
A-30	SUBDRAIN OUTLETS AND CONNECTIONS, PVC, 6"	EA	14		
A-31	WATER MAIN, TRENCHED, PVC, 4"	LF	30		
A-32	WATER MAIN, TRENCHED, PVC, 8"	LF	390		
A-33	WATER MAIN, TRENCHED, PVC, 10"	LF	821		
A-34	WATER MAIN, TRENCHLESS, PVC, RESTRAINED JOINT, 8"	LF	173		
A-35	WATER MAIN, TRENCHLESS, PVC, RESTRAINED JOINT, 10"	LF	515		
A-36	FITTINGS, DUCTILE IRON, MECHANICAL JOINT, BY WEIGHT	LB	2684		
A-37	WATER SERVICE STUB	EA	15		
A-38	WATER SERVICE PIPE, COPPER 1"	LF	503		
A-39	VALVE, GATE, 8"	EA	7		
A-40	VALVE, GATE, 10"	EA	9		
41	VALVE, INSERTION, 4"-10"	EA	2		
A-41	VALVE, INSERTION, 4"	EA	1		
A-42	VALVE, INSERTION, 6"	EA	1		
A-43	VALVE, INSERTION, 8"	EA	1		
A-44	VALVE, INSERTION, 10"	EA	1		
A-45	FIRE HYDRANT ASSEMBLY	EA	5		
A-46	FIRE HYDRANT ASSEMBLY REMOVAL	EA	4		
A-47	SANITARY SEWER MANHOLE, SW-301, 48"	EA	2		
A-48	STORM SEWER MANHOLE, SW-401, 48"	EA	5		
A-49	STORM SEWER MANHOLE, SW-401, 60"	EA	2		
A-50	STORM SEWER MANHOLE, SW-401, 72"	EA	1		
A-51	STORM SEWER INTAKE, SW-501	EA	5		
A-52	STORM SEWER INTAKE, SW-503; MODIFIED	EA	1		
A-53	STORM SEWER INTAKE, SW-505	EA	8		
A-54	STORM SEWER INTAKE, SW-506	EA	5		

ITEM NO.	ITEM	UNIT	QUANTITY	UNIT PRICE	TOTAL
A-55	STORM SEWER INTAKE, SW-512, 24"	EA	1		
A-56	MANHOLE ADJUSTMENT, MINOR	EA	1		
A-57	CONNECTION TO EXISTING INTAKE	EA	2		
A-58	REMOVE MANHOLE	EA	8		
A-59	REMOVE INTAKE	EA	11		
A-60	PAVEMENT, PCC, 7"	SY	6087		
A-61	PCC PAVEMENT SAMPLES AND TESTING	LS	1		
A-62	REMOVAL OF SIDEWALK	SY	507		
A-63	REMOVAL OF DRIVEWAY	SY	617		
A-64	SIDEWALK, PCC, 4"	SY	270		
A-65	SIDEWALK, PCC, 6"	SY	299		
A-66	DETECTABLE WARNING	SF	278		
A-67	DRIVEWAY, PAVED, PCC, 6"	SY	702		
A-68	FULL DEPTH PATCHES, HMA, 8"	SY	42		
A-69	PAVEMENT REMOVAL	SY	6100		
A-70	REMOVE AND REPLACE CURB AND GUTTER, PCC, 30"	LF	102		
A-71	PAINTED PAVEMENT MARKINGS, DURABLE	STA	33		
A-72	GROOVES CUT FOR PAVEMENT MARKINGS	STA	33		
A-73	TEMPORARY TRAFFIC CONTROL	LS	1		
A-74	CONVENTIONAL SEEDING, FERTILIZING, AND MULCHING, TYPE 1	AC	1		
A-75	SWPPP PREPARATION	LS	1		
A-76	SWPPP MANAGEMENT	LS	1		
A-77	WATTLE, 12"	LF	500		
A-78	WATTLE, REMOVAL	LF	500		
A-79	INLET PROTECTION DEVICE	EA	29		
A-80	INLET PROTECTION DEVICE, MAINTENANCE AND REMOVAL	EA	29		
A-81	REMOVAL AND REINSTALLATION OF CHAIN LINK FENCE	LF	24		
A-82	CONSTRUCTION SURVEY	LS	1		
A-83	MOBILIZATION	LS	1		
A-84	MAINTENANCE OF POSTAL SERVICE	LS	1		
A-85	MAINTENANCE OF SOLID WASTE COLLECTION	LS	1		
A-86	CONCRETE WASHOUT	LS	1		
TOTAL ITEM 1 – 86 (OPTION A – PCC)					\$

ITEM NO.	ITEM	UNIT	QUANTITY	UNIT PRICE	TOTAL
OPTION B - ASPHALT					
B-1	TOPSOIL OFF-SITE	CY	1209		
B-2	EXCAVATION, CLASS 13	CY	2706		
B-3	SUBGRADE PREPARATION	SY	6880		
B-4	SUBGRADE TREATMENT, GEOGRID	SY	6880		
B-5	SUBBASE, MODIFIED 6"	SY	6880		
B-6	COMPACTION TESTING	LS	1		
B-7	EXPLORATORY EXCAVATION	HR	32		
B-8	TRENCH COMPACTION TESTING	LS	1		
9	SANITARY SEWER GRAVITY MAIN, TRENCHED, PVC, 4"	LF	54		
B-9	SANITARY SEWER GRAVITY MAIN, TRENCHED, PVC, 10"	LF	799		
B-10	SANITARY SEWER SERVICE STUB, PVC, 4"	LF	450		
B-11	SANITARY SEWER SERVICE STUB, PVC, 6"	LF	450		
13	REMOVAL OF SANITARY SEWER, VCP, 4"	LF	54		
B-12	REMOVAL OF SANITARY SEWER, VCP, 10"	LF	798		
B-13	STORM SEWER, TRENCHED, PVC, 8"	LF	64		
B-14	STORM SEWER, TRENCHED, PVC, 12"	LF	24		
B-15	STORM SEWER, TRENCHED, RCP, 15"	LF	608		
B-16	STORM SEWER, TRENCHED, RCP, 18"	LF	384		
B-17	STORM SEWER, TRENCHED, RCP, 24"	LF	520		
B-18	STORM SEWER, TRENCHED, RCP, 30"	LF	64		
B-19	REMOVAL OF STORM SEWER, PVC, 6"	LF	26		
B-20	REMOVAL OF STORM SEWER, PVC, 8"	LF	16		
B-21	REMOVAL OF STORM SEWER, VCP, 8"	LF	106		
B-22	REMOVAL OF STORM SEWER, VCP, 10"	LF	210		
B-23	REMOVAL OF STORM SEWER, VCP, 12"	LF	377		
B-24	REMOVAL OF STORM SEWER, RCP, 15"	LF	82		
B-25	REMOVAL OF STORM SEWER, VCP, 18"	LF	176		
B-26	STORM SEWER ABANDONMENT, FILL AND PLUG	LF	175		
B-27	SUBDRAIN, TYPE 1, PVC, 6"	LF	1691		
B-28	FOOTING DRAIN COLLECTOR, PERFORATED PVC, 8"	LF	232		
B-29	SUBDRAIN CLEANOUT, TYPE A-1, PVC, 6"	EA	8		
B-30	SUBDRAIN OUTLETS AND CONNECTIONS, PVC, 6"	EA	14		
B-31	WATER MAIN, TRENCHED, PVC, 4"	LF	30		
B-32	WATER MAIN, TRENCHED, PVC, 8"	LF	390		

ITEM NO.	ITEM	UNIT	QUANTITY	UNIT PRICE	TOTAL
B-33	WATER MAIN, TRENCHED, PVC, 10"	LF	821		
B-34	WATER MAIN, TRENCHLESS, PVC, RESTRAINED JOINT, 8"	LF	173		
B-35	WATER MAIN, TRENCHLESS, PVC, RESTRAINED JOINT, 10"	LF	515		
B-36	FITTINGS, DUCTILE IRON, MECHANICAL JOINT, BY WEIGHT	LB	2684		
B-37	WATER SERVICE STUB	EA	15		
B-38	WATER SERVICE PIPE, COPPER 1"	LF	503		
B-39	VALVE, GATE, 8"	EA	7		
B-40	VALVE, GATE, 10"	EA	9		
41	VALVE, INSERTION, 4"-10"	EA	2		
B-41	VALVE, INSERTION, 4"	EA	1		
B-42	VALVE, INSERTION, 6"	EA	1		
B-43	VALVE, INSERTION, 8"	EA	1		
B-44	VALVE, INSERTION, 10"	EA	1		
B-45	FIRE HYDRANT ASSEMBLY	EA	5		
B-46	FIRE HYDRANT ASSEMBLY REMOVAL	EA	4		
B-47	SANITARY SEWER MANHOLE, SW-301, 48"	EA	2		
B-48	STORM SEWER MANHOLE, SW-401, 48"	EA	5		
B-49	STORM SEWER MANHOLE, SW-401, 60"	EA	2		
B-50	STORM SEWER MANHOLE, SW-401, 72"	EA	1		
B-51	STORM SEWER INTAKE, SW-501	EA	5		
B-52	STORM SEWER INTAKE, SW-503; MODIFIED	EA	1		
B-53	STORM SEWER INTAKE, SW-505	EA	8		
B-54	STORM SEWER INTAKE, SW-506	EA	5		
B-55	STORM SEWER INTAKE, SW-512, 24"	EA	1		
B-56	MANHOLE ADJUSTMENT, MINOR	EA	1		
B-57	CONNECTION TO EXISTING INTAKE	EA	2		
B-58	REMOVE MANHOLE	EA	8		
B-59	REMOVE INTAKE	EA	11		
B-60	CURB AND GUTTER, 30"	LF	3611		
B-61	PAVEMENT, HMA, 8"	SY	5084		
B-62	HMA PAVEMENT SAMPLES AND TESTING	LS	1		
B-63	REMOVAL OF SIDEWALK	SY	507		
B-64	REMOVAL OF DRIVEWAY	SY	617		
B-65	SIDEWALK, PCC, 4"	SY	270		
B-66	SIDEWALK, PCC, 6"	SY	299		
B-67	DETECTABLE WARNING	SF	278		

ITEM NO.	ITEM	UNIT	QUANTITY	UNIT PRICE	TOTAL
B-68	DRIVEWAY, PAVED, PCC, 6"	SY	702		
B-69	FULL DEPTH PATCHES, HMA, 8"	SY	42		
B-70	PAVEMENT REMOVAL	SY	6100		
B-71	REMOVE AND REPLACE CURB AND GUTTER, PCC, 30"	LF	102		
B-72	PAINTED PAVEMENT MARKINGS, DURABLE	STA	33		
B-73	GROOVES CUT FOR PAVEMENT MARKINGS	STA	33		
B-74	TEMPORARY TRAFFIC CONTROL	LS	1		
B-75	CONVENTIONAL SEEDING, FERTILIZING, AND MULCHING, TYPE 1	AC	1		
B-76	SWPPP PREPARATION	LS	1		
B-77	SWPPP MANAGEMENT	LS	1		
B-78	WATTLE, 12"	LF	500		
B-79	WATTLE, REMOVAL	LF	500		
B-80	INLET PROTECTION DEVICE	EA	29		
B-81	INLET PROTECTION DEVICE, MAINTENANCE AND REMOVAL	EA	29		
B-82	REMOVAL AND REINSTALLATION OF CHAIN LINK FENCE	LF	24		
B-83	CONSTRUCTION SURVEY	LS	1		
B-84	MOBILIZATION	LS	1		
B-85	MAINTENANCE OF POSTAL SERVICE	LS	1		
B-86	MAINTENANCE OF SOLID WASTE COLLECTION	LS	1		
B-87	CONCRETE WASHOUT	LS	1		
TOTAL ITEM 1 – 87 (OPTION B – ASPHALT)					\$

TOTAL ITEM 1 – 86 (OPTION A – PCC)	\$
TOTAL ITEM 1 – 87 (OPTION B – ASPHALT)	\$

NOTE: IT IS UNDERSTOOD THAT THE ABOVE QUANTITIES ARE ESTIMATED FOR THE PURPOSE OF THIS BID. ALL QUANTITIES ARE SUBJECT TO REVISION BY THE CITY. QUANTITY CHANGES WHICH AMOUNT TO TWENTY (20) PERCENT OR LESS OF THE TOTAL BID SHALL NOT AFFECT THE UNIT PRICE BID.

Bidder

**CONTRACT
2024 STREET IMPROVEMENTS
NEVADA, IOWA**

THIS CONTRACT, made and entered into this _____ day of _____, 2024, by and between the City of Nevada, Iowa by its Mayor, upon order of its City Council hereinafter called the "Jurisdiction", and Contractor, hereinafter called the "Contractor".

WITNESSETH:

The Contractor hereby agrees to complete the work comprising the below referenced improvement as specified in the contract documents, which are officially on file with the Jurisdiction, in the office of the City Clerk. This contract includes all contract documents. The work under this contract shall be constructed in accordance with the 2023 Edition of the Urban Standard Specifications for Public Improvements, as further modified by the supplemental specifications and special provisions included in said contract documents, and the Contract Attachment, which is attached hereto. The Contractor further agrees to complete the work in strict accordance with said contract documents, and guarantee the work as required by law, for the time required in said contract documents, after its acceptance by the Jurisdiction.

This contract is awarded and executed for completion of the work specified in the contract documents for the bid prices shown on the Contract Attachment: Bid Items, Quantities and Prices which were proposed by the Contractor in its proposal submitted in accordance with Notice to Bidders and Notice of Public Hearing for the following described improvements:

This project includes all materials, equipment, transportation and labor necessary for the reconstruction of I Avenue from 8th Street to 9th Street, H Avenue from 8th Street to 10th Street and 9th Street from G Avenue to I Avenue. Project items include 7" thick PCC pavement or 8" thick HMA pavement, sanitary sewer water main, storm sewer, sidewalk, driveways, traffic control, restoration, and associated work. Specific project location along with the kind and approximate quantity of materials to be used shall be as set forth in the Plans and Specifications.

The Contractor agrees to perform said work for and in consideration of the Jurisdiction's payment of the bid amount of `WrittenContractAmount` dollars (`$ContractNumericAmount`), which amount shall constitute the required amount of the performance, maintenance, and payment bond. The Contractor hereby agrees to commence work under this contract within 10 days of the date specified on the Notice to Proceed, work shall be substantially complete on or before November 1, 2024, and shall be fully completed on or before December 1, 2024, and to pay liquidated damages for noncompliance with said completion provisions at a rate of Five Hundred & 00/100 Dollars (`$500.00`) dollars for each calendar day that the work remains incomplete.

IN WITNESS WHEREOF, the Parties hereto have executed this instrument, in triplicate on the date first shown written.

JURISDICTION: City of Nevada, Iowa

CONTRACTOR:

By _____
Brett Barker, Mayor

Contractor

(Seal)
ATTEST: _____

By _____
CAuthorizedSignature, CAuthorizedTitle

Kerin Wright, City Clerk

Print Name, Title

CAddress1
Street Address

CAddress2
City, State, Zip Code

CPhone
Telephone

CONTRACTOR PUBLIC REGISTRATION INFORMATION To Be Provided By:

1. All Contractors: The Contractor shall enter its Public Registration No. _____ issued by the Iowa Commissioner of Labor pursuant to Section 91C.5 of the Iowa Code.
2. Out-of-State Contractors:
 - A. Pursuant to Section 91C.7 of the Iowa Code, an out-of-state contractor, before commencing a contract in excess of five thousand dollars in value in Iowa, shall file a bond with the division of labor services of the department of workforce development. The contractor should contact 515-242-5871 for further information. Prior to contract execution, the Engineer may forward a copy of this contract to the Iowa Department of Workforce Development as notification of pending construction work. It is the contractor's responsibility to comply with said Section 91C.7 before commencing this work.
 - B. Prior to entering into contract, the designated low bidder, if it be a corporation organized under the laws of a state other than Iowa, shall file with the Jurisdictional Engineer a certificate from the Secretary of the State of Iowa showing that it has complied with all the provisions of Chapter 490 of the Code of Iowa, or as amended, governing foreign corporations. For further information contact the Iowa Secretary of State Office at 515-281-5204.

Bond No. _____
Name of Surety _____

NOTE: All signatures on this contract must be original signatures in ink; copies or facsimile of any signature will not be accepted.

CORPORATE ACKNOWLEDGMENT

State of _____)
) SS
_____ County)

On this _____ day of _____, 20____, before me, the undersigned, a Notary Public in and for the State of _____, personally appeared _____ and _____, to me known, who, being by me duly sworn, did say that they are the _____, and _____, respectively, of the corporation executing the foregoing instrument; that (no seal has been procured by) (the seal affixed thereto is the seal of) the corporation; that said instrument was signed (and sealed) on behalf of the corporation by authority of this Board of Directors; that _____ and _____ acknowledged the execution of the instrument to be the voluntary act and deed of the corporation, by it and by them voluntarily executed.

Notary Public in and for the State of _____
My commission expires _____,20 _____

CONTRACT ATTACHMENT: ITEM 1: GENERAL - None

CONTRACT ATTACHMENT: ITEM 2: BID ITEMS, QUANTITIES

THIS CONTRACT IS AWARDED AND EXECUTED FOR COMPLETION OF THE WORK SPECIFIED IN THE CONTRACT DOCUMENTS FOR THE BID PRICES TABULATED BELOW AS PROPOSED BY THE CONTRACTOR IN ITS PROPOSAL SUBMITTED IN ACCORDANCE WITH NOTICE TO BIDDERS AND NOTICE OF PUBLIC HEARING. ALL QUANTITIES ARE SUBJECT TO REVISION BY THE JURISDICTION. BASED ON BIDS RECEIVED, THE CITY RESERVES THE RIGHT TO ADJUST QUANTITIES AS NECESSARY TO MAXIMIZE FUNDS BUDGETED FOR THIS PROJECT.

ITEM NO.	ITEM	UNIT	QUANTITY	UNIT PRICE	TOTAL
OPTION A - PCC					
A-1	TOPSOIL OFF-SITE	CY	1209		
A-2	EXCAVATION, CLASS 13	CY	2565		
A-3	SUBGRADE PREPARATION	SY	6880		
A-4	SUBGRADE TREATMENT, GEOGRID	SY	6880		
A-5	SUBBASE, MODIFIED 6"	SY	6880		
A-6	COMPACTION TESTING	LS	1		
A-7	EXPLORATORY EXCAVATION	HR	32		
A-8	TRENCH COMPACTION TESTING	LS	1		
9	SANITARY SEWER GRAVITY MAIN, TRENCHED, PVC, 4"	LF	54		
A-9	SANITARY SEWER GRAVITY MAIN, TRENCHED, PVC, 10"	LF	799		
A-10	SANITARY SEWER SERVICE STUB, PVC, 4"	LF	450		
A-11	SANITARY SEWER SERVICE STUB, PVC, 6"	LF	450		
13	REMOVAL OF SANITARY SEWER, VCP, 4"	LF	54		
A-12	REMOVAL OF SANITARY SEWER, VCP, 10"	LF	798		
A-13	STORM SEWER, TRENCHED, PVC, 8"	LF	64		
A-14	STORM SEWER, TRENCHED, PVC, 12"	LF	24		
A-15	STORM SEWER, TRENCHED, RCP, 15"	LF	608		
A-16	STORM SEWER, TRENCHED, RCP, 18"	LF	384		
A-17	STORM SEWER, TRENCHED, RCP, 24"	LF	520		
A-18	STORM SEWER, TRENCHED, RCP, 30"	LF	64		
A-19	REMOVAL OF STORM SEWER, PVC, 6"	LF	26		
A-20	REMOVAL OF STORM SEWER, PVC, 8"	LF	16		
A-21	REMOVAL OF STORM SEWER, VCP, 8"	LF	106		
A-22	REMOVAL OF STORM SEWER, VCP, 10"	LF	210		
A-23	REMOVAL OF STORM SEWER, VCP, 12"	LF	377		
A-24	REMOVAL OF STORM SEWER, RCP, 15"	LF	82		
A-25	REMOVAL OF STORM SEWER, VCP, 18"	LF	176		

ITEM NO.	ITEM	UNIT	QUANTITY	UNIT PRICE	TOTAL
A-26	STORM SEWER ABANDONMENT, FILL AND PLUG	LF	175		
A-27	SUBDRAIN, TYPE 1, PVC, 6"	LF	1691		
A-28	FOOTING DRAIN COLLECTOR, PERFORATED PVC, 8"	LF	232		
A-29	SUBDRAIN CLEANOUT, TYPE A-1, PVC, 6"	EA	8		
A-30	SUBDRAIN OUTLETS AND CONNECTIONS, PVC, 6"	EA	14		
A-31	WATER MAIN, TRENCHED, PVC, 4"	LF	30		
A-32	WATER MAIN, TRENCHED, PVC, 8"	LF	390		
A-33	WATER MAIN, TRENCHED, PVC, 10"	LF	821		
A-34	WATER MAIN, TRENCHLESS, PVC, RESTRAINED JOINT, 8"	LF	173		
A-35	WATER MAIN, TRENCHLESS, PVC, RESTRAINED JOINT, 10"	LF	515		
A-36	FITTINGS, DUCTILE IRON, MECHANICAL JOINT, BY WEIGHT	LB	2684		
A-37	WATER SERVICE STUB	EA	15		
A-38	WATER SERVICE PIPE, COPPER 1"	LF	503		
A-39	VALVE, GATE, 8"	EA	7		
A-40	VALVE, GATE, 10"	EA	9		
41	VALVE, INSERTION, 4"-10"	EA	2		
A-41	VALVE, INSERTION, 4"	EA	1		
A-42	VALVE, INSERTION, 6"	EA	1		
A-43	VALVE, INSERTION, 8"	EA	1		
A-44	VALVE, INSERTION, 10"	EA	1		
A-45	FIRE HYDRANT ASSEMBLY	EA	5		
A-46	FIRE HYDRANT ASSEMBLY REMOVAL	EA	4		
A-47	SANITARY SEWER MANHOLE, SW-301, 48"	EA	2		
A-48	STORM SEWER MANHOLE, SW-401, 48"	EA	5		
A-49	STORM SEWER MANHOLE, SW-401, 60"	EA	2		
A-50	STORM SEWER MANHOLE, SW-401, 72"	EA	1		
A-51	STORM SEWER INTAKE, SW-501	EA	5		
A-52	STORM SEWER INTAKE, SW-503; MODIFIED	EA	1		
A-53	STORM SEWER INTAKE, SW-505	EA	8		
A-54	STORM SEWER INTAKE, SW-506	EA	5		
A-55	STORM SEWER INTAKE, SW-512, 24"	EA	1		
A-56	MANHOLE ADJUSTMENT, MINOR	EA	1		
A-57	CONNECTION TO EXISTING INTAKE	EA	2		

ITEM NO.	ITEM	UNIT	QUANTITY	UNIT PRICE	TOTAL
A-58	REMOVE MANHOLE	EA	8		
A-59	REMOVE INTAKE	EA	11		
A-60	PAVEMENT, PCC, 7"	SY	6087		
A-61	PCC PAVEMENT SAMPLES AND TESTING	LS	1		
A-62	REMOVAL OF SIDEWALK	SY	507		
A-63	REMOVAL OF DRIVEWAY	SY	617		
A-64	SIDEWALK, PCC, 4"	SY	270		
A-65	SIDEWALK, PCC, 6"	SY	299		
A-66	DETECTABLE WARNING	SF	278		
A-67	DRIVEWAY, PAVED, PCC, 6"	SY	702		
A-68	FULL DEPTH PATCHES, HMA, 8"	SY	42		
A-69	PAVEMENT REMOVAL	SY	6100		
A-70	REMOVE AND REPLACE CURB AND GUTTER, PCC, 30"	LF	102		
A-71	PAINTED PAVEMENT MARKINGS, DURABLE	STA	33		
A-72	GROOVES CUT FOR PAVEMENT MARKINGS	STA	33		
A-73	TEMPORARY TRAFFIC CONTROL	LS	1		
A-74	CONVENTIONAL SEEDING, FERTILIZING, AND MULCHING, TYPE 1	AC	1		
A-75	SWPPP PREPARATION	LS	1		
A-76	SWPPP MANAGEMENT	LS	1		
A-77	WATTLE, 12"	LF	500		
A-78	WATTLE, REMOVAL	LF	500		
A-79	INLET PROTECTION DEVICE	EA	29		
A-80	INLET PROTECTION DEVICE, MAINTENANCE AND REMOVAL	EA	29		
A-81	REMOVAL AND REINSTALLATION OF CHAIN LINK FENCE	LF	24		
A-82	CONSTRUCTION SURVEY	LS	1		
A-83	MOBILIZATION	LS	1		
A-84	MAINTENANCE OF POSTAL SERVICE	LS	1		
A-85	MAINTENANCE OF SOLID WASTE COLLECTION	LS	1		
A-86	CONCRETE WASHOUT	LS	1		
TOTAL ITEM 1 – 86 (OPTION A – PCC)					\$

ITEM NO.	ITEM	UNIT	QUANTITY	UNIT PRICE	TOTAL
OPTION B - ASPHALT					
B-1	TOPSOIL OFF-SITE	CY	1209		
B-2	EXCAVATION, CLASS 13	CY	2706		
B-3	SUBGRADE PREPARATION	SY	6880		
B-4	SUBGRADE TREATMENT, GEOGRID	SY	6880		
B-5	SUBBASE, MODIFIED 6"	SY	6880		
B-6	COMPACTION TESTING	LS	1		
B-7	EXPLORATORY EXCAVATION	HR	32		
B-8	TRENCH COMPACTION TESTING	LS	1		
9	SANITARY SEWER GRAVITY MAIN, TRENCHED, PVC, 4"	LF	54		
B-9	SANITARY SEWER GRAVITY MAIN, TRENCHED, PVC, 10"	LF	799		
B-10	SANITARY SEWER SERVICE STUB, PVC, 4"	LF	450		
B-11	SANITARY SEWER SERVICE STUB, PVC, 6"	LF	450		
13	REMOVAL OF SANITARY SEWER, VCP, 4"	LF	54		
B-12	REMOVAL OF SANITARY SEWER, VCP, 10"	LF	798		
B-13	STORM SEWER, TRENCHED, PVC, 8"	LF	64		
B-14	STORM SEWER, TRENCHED, PVC, 12"	LF	24		
B-15	STORM SEWER, TRENCHED, RCP, 15"	LF	608		
B-16	STORM SEWER, TRENCHED, RCP, 18"	LF	384		
B-17	STORM SEWER, TRENCHED, RCP, 24"	LF	520		
B-18	STORM SEWER, TRENCHED, RCP, 30"	LF	64		
B-19	REMOVAL OF STORM SEWER, PVC, 6"	LF	26		
B-20	REMOVAL OF STORM SEWER, PVC, 8"	LF	16		
B-21	REMOVAL OF STORM SEWER, VCP, 8"	LF	106		
B-22	REMOVAL OF STORM SEWER, VCP, 10"	LF	210		
B-23	REMOVAL OF STORM SEWER, VCP, 12"	LF	377		
B-24	REMOVAL OF STORM SEWER, RCP, 15"	LF	82		
B-25	REMOVAL OF STORM SEWER, VCP, 18"	LF	176		
B-26	STORM SEWER ABANDONMENT, FILL AND PLUG	LF	175		
B-27	SUBDRAIN, TYPE 1, PVC, 6"	LF	1691		
B-28	FOOTING DRAIN COLLECTOR, PERFORATED PVC, 8"	LF	232		
B-29	SUBDRAIN CLEANOUT, TYPE A-1, PVC, 6"	EA	8		
B-30	SUBDRAIN OUTLETS AND CONNECTIONS, PVC, 6"	EA	14		

ITEM NO.	ITEM	UNIT	QUANTITY	UNIT PRICE	TOTAL
B-31	WATER MAIN, TRENCHED, PVC, 4"	LF	30		
B-32	WATER MAIN, TRENCHED, PVC, 8"	LF	390		
B-33	WATER MAIN, TRENCHED, PVC, 10"	LF	821		
B-34	WATER MAIN, TRENCHLESS, PVC, RESTRAINED JOINT, 8"	LF	173		
B-35	WATER MAIN, TRENCHLESS, PVC, RESTRAINED JOINT, 10"	LF	515		
B-36	FITTINGS, DUCTILE IRON, MECHANICAL JOINT, BY WEIGHT	LB	2684		
B-37	WATER SERVICE STUB	EA	15		
B-38	WATER SERVICE PIPE, COPPER 1"	LF	503		
B-39	VALVE, GATE, 8"	EA	7		
B-40	VALVE, GATE, 10"	EA	9		
41	VALVE, INSERTION, 4" 10"	EA	2		
B-41	VALVE, INSERTION, 4"	EA	1		
B-42	VALVE, INSERTION, 6"	EA	1		
B-43	VALVE, INSERTION, 8"	EA	1		
B-44	VALVE, INSERTION, 10"	EA	1		
B-45	FIRE HYDRANT ASSEMBLY	EA	5		
B-46	FIRE HYDRANT ASSEMBLY REMOVAL	EA	4		
B-47	SANITARY SEWER MANHOLE, SW-301, 48"	EA	2		
B-48	STORM SEWER MANHOLE, SW-401, 48"	EA	5		
B-49	STORM SEWER MANHOLE, SW-401, 60"	EA	2		
B-50	STORM SEWER MANHOLE, SW-401, 72"	EA	1		
B-51	STORM SEWER INTAKE, SW-501	EA	5		
B-52	STORM SEWER INTAKE, SW-503; MODIFIED	EA	1		
B-53	STORM SEWER INTAKE, SW-505	EA	8		
B-54	STORM SEWER INTAKE, SW-506	EA	5		
B-55	STORM SEWER INTAKE, SW-512, 24"	EA	1		
B-56	MANHOLE ADJUSTMENT, MINOR	EA	1		
B-57	CONNECTION TO EXISTING INTAKE	EA	2		
B-58	REMOVE MANHOLE	EA	8		
B-59	REMOVE INTAKE	EA	11		
B-60	CURB AND GUTTER, 30"	LF	3611		
B-61	PAVEMENT, HMA, 8"	SY	5084		
B-62	HMA PAVEMENT SAMPLES AND TESTING	LS	1		
B-63	REMOVAL OF SIDEWALK	SY	507		
B-64	REMOVAL OF DRIVEWAY	SY	617		

ITEM NO.	ITEM	UNIT	QUANTITY	UNIT PRICE	TOTAL
B-65	SIDEWALK, PCC, 4"	SY	270		
B-66	SIDEWALK, PCC, 6"	SY	299		
B-67	DETECTABLE WARNING	SF	278		
B-68	DRIVEWAY, PAVED, PCC, 6"	SY	702		
B-69	FULL DEPTH PATCHES, HMA, 8"	SY	42		
B-70	PAVEMENT REMOVAL	SY	6100		
B-71	REMOVE AND REPLACE CURB AND GUTTER, PCC, 30"	LF	102		
B-72	PAINTED PAVEMENT MARKINGS, DURABLE	STA	33		
B-73	GROOVES CUT FOR PAVEMENT MARKINGS	STA	33		
B-74	TEMPORARY TRAFFIC CONTROL	LS	1		
B-75	CONVENTIONAL SEEDING, FERTILIZING, AND MULCHING, TYPE 1	AC	1		
B-76	SWPPP PREPARATION	LS	1		
B-77	SWPPP MANAGEMENT	LS	1		
B-78	WATTLE, 12"	LF	500		
B-79	WATTLE, REMOVAL	LF	500		
B-80	INLET PROTECTION DEVICE	EA	29		
B-81	INLET PROTECTION DEVICE, MAINTENANCE AND REMOVAL	EA	29		
B-82	REMOVAL AND REINSTALLATION OF CHAIN LINK FENCE	LF	24		
B-83	CONSTRUCTION SURVEY	LS	1		
B-84	MOBILIZATION	LS	1		
B-85	MAINTENANCE OF POSTAL SERVICE	LS	1		
B-86	MAINTENANCE OF SOLID WASTE COLLECTION	LS	1		
B-87	CONCRETE WASHOUT	LS	1		
TOTAL ITEM 1 – 87 (OPTION B – ASPHALT)					\$

TOTAL ITEM 1 – 86 (OPTION A – PCC)	\$
TOTAL ITEM 1 – 87 (OPTION B – ASPHALT)	\$

ESTIMATED PROJECT QUANTITIES
(1 DIVISION PROJECT)

Table with 6 columns: Item No., Item Code, Item, Unit, Total, As Built Qty. Rows include items B-68 through B-87, detailing quantities for items like Driveway, Paved, PCC, 6"; Full Depth Patches, HMA, 8"; Pavement Removal; etc.

ESTIMATE REFERENCE INFORMATION

Table with 3 columns: Item No., Item Code, Description. Rows include items A-1 through A-11, detailing descriptions for items like Topsoil Off-Site; Excavation, Class 1B; Subgrade Preparation; Sanitary Sewer Gravity Main, Trenched, PVC, 10"; etc.

ESTIMATE REFERENCE INFORMATION

Table with 3 columns: Item No., Item Code, Description. Rows include items A-12 through A-36, detailing descriptions for items like Removal of Sanitary Sewer, VCP, 10"; Storm Sewer, Trenched, PVC, 8"; Water Main, Trenched, PVC, 4"; etc.

PlotDwg: pdf_dw_no_level.plt;g
Model: C02
P:\Tb\hg.tbl
Last Saved: 1/25/2024

Table with 2 columns: Field Name, Value. Fields include DRAWN BY: HCM/CMB, JOB DATE: 2023, APPROVED: HRG/PM, JOB NUMBER: 2303452, CAD DATE: 1/25/2024 12:45:19 PM, CAD FILE: ...ICADISheets\SH2_2303452_C01.dgn

Table with 4 columns: NO., DATE, BY, REVISION DESCRIPTION. Contains one row with empty cells.



2024 STREET IMPROVEMENTS
CITY OF NEVADA, IOWA 2023

ESTIMATE OF QUANTITIES
AND GENERAL INFORMATION

SHEET NO.
C.02

ESTIMATE REFERENCE INFORMATION

Item No.	Item Code	Description
A-37	5010-D	WATER SERVICE STUD 1. REFER TO PLAN LOCATIONS IN THE MM SHEETS. LOCATIONS ARE APPROXIMATE. CONTRACTOR TO VERIFY. 2. INCLUDES, BUT IS NOT LIMITED TO 1" CORPORATION, 1" CURB STOP, STOP BOX, TRENCH EXCAVATION, DOWATERING, FURNISHING BEDDING MATERIAL, INSTALLATION OF TRACER WIRE SYSTEM FOR NON-METALLIC SERVICE PIPE, PLACING BEDDING AND BACKFILL MATERIAL, AND MISCELLANEOUS COUPLINGS AND FITTINGS FOR THE SERVICE PIPE AND TO REDUCE TO THE EXISTING LINE. 3. SERVICE PIPE PAID FOR SEPARATELY BY LENGTH. SEE WATER SERVICE PIPE ITEM. 4. UTILIZE FLARED CONNECTIONS. 5. UTILIZE ARCH STYLE CURB STOP BOX 6. CONTACT CITY OF NEVADA WATER DEPARTMENT FOR FURTHER REQUIREMENTS.
A-38	5010-F-1	WATER SERVICE PIPE, COPPER 1" 1. REFER TO PLAN LOCATIONS IN THE MM SHEETS. LOCATIONS ARE APPROXIMATE. CONTRACTOR TO VERIFY. 2. WATER SERVICE TO BE INSTALLED AT SIMILAR TIME AND LOCATION AS SANITARY SERVICES. 3. THIS ITEM IS FOR SERVICE PIPE ONLY. SEE WATER SERVICE STUD ITEM FOR OTHER ITEMS
A-39	5020-A	VALVE, GATE, 8"
A-40	5020-A	VALVE, GATE, 10"
A-41	5020-A	VALVE, INSERTION, 4"
A-42	5020-A	VALVE, INSERTION, 6"
A-43	5020-A	VALVE, INSERTION, 8"
A-44	5020-A	VALVE, INSERTION, 10" 1. VALVES SHALL BE DUCTILE IRON MECHANICAL JOINT RESTRAINED WITH MEGALUG SCREES 2000PV, OR APPROVED EQUAL. 2. ITEM INCLUDES ALL VALVE ACCESSORIES NECESSARY FOR A COMPLETE INSTALLATION INCLUDING MEGALUGS. 3. POLY WRAP IS REQUIRED AND IS INCIDENTAL 4. PROVIDE VALVE BOX ADAPTER 11, OR ENGINEER APPROVED EQUIVALENT, FOR ALL VALVE BOXES. 5. INSERTION VALVES TO BE USED AS SHOWN. THIS IS INCLUDED AS A CONTINGENCY ITEM AND SHALL ONLY BE USED IF AUTHORIZED BY THE ENGINEER. THE QUANTITY FOR WHICH PAYMENT WILL BE MADE WILL BE COUNTED PER EACH VALVE INSTALLED.
A-45	5020-C	FIRE HYDRANT ASSEMBLY 1. FIRE HYDRANT SHALL BE CLON MEGALUG, FULLER CENTERLINE, OR WATEROUS WB 6/ 250 2. HYDRANTS SHALL BE PROVIDED WITH 5" STORM PUMPER NOZZLE AND TWO (2) 2-1/2" HOSE NOZZLES. 3. ITEM INCLUDES ALL MATERIAL AND FITTING ACCESSORIES NECESSARY FOR A COMPLETE INSTALLATION. 4. HYDRANT ASSEMBLY SHALL BE COMPLETELY RESTRAINED WITH RETAINING GLANDS OR WITH ANCHOR PIPE AND COUPLINGS IN ACCORDANCE WITH SUDAS 5020.201.
A-46	5020-J	FIRE HYDRANT ASSEMBLY REMOVAL 1. INCLUDES AUXILIARY VALVE BOX REMOVAL 2. HYDRANTS SHALL BE SALVAGED AND RETURNED TO THE CITY OF NEVADA AT THE CITY'S WATER TREATMENT PLANT: 1231 N LINCOLN HWY NEVADA, IA 50201
A-47	6010-A	SANITARY SEWER MANHOLE, SW-301, 48" 1. REFER TO C SHEETS FOR STORM SEWER TABULATION. 2. REFER TO M SHEETS FOR LOCATION OF MANHOLES. 3. USE 3 PIECE CASTING ON ALL MANHOLES IN PAVEMENT SECTIONS. EXTERNAL CHIMNEY SEALS SHALL BE USED FOR MANHOLES NOT IN PAVEMENT. USE STRIKE 1/1 BARRIER OR EQUAL FOR MANHOLES IN PAVEMENT. 4. MANHOLES SHALL NOT HAVE STEPS.
A-48	6010-A	STORM SEWER MANHOLE, SW-401, 48"
A-49	6010-A	STORM SEWER MANHOLE, SW-401, 60"
A-50	6010-A	STORM SEWER MANHOLE, SW-401, 72" 1. REFER TO C SHEETS FOR STORM SEWER TABULATION. 2. REFER TO M SHEETS FOR LOCATION OF MANHOLES. 3. USE 3 PIECE CASTING ON ALL MANHOLES IN PAVEMENT SECTIONS.
A-51	6010-B	STORM SEWER INTAKE, SW-501
A-52	6010-B	STORM SEWER INTAKE, SW-503; MODIFIED
A-53	6010-B	STORM SEWER INTAKE, SW-505
A-54	6010-B	STORM SEWER INTAKE, SW 506
A-55	6010-B	STORM SEWER INTAKE, SW 512, 24"
A-56	6010-F-1	MANHOLE ADJUSTMENT, MINOR 1. ADJUST EXISTING MANHOLE TO MATCH PROPOSED SURFACE ELEVATION
A-57	6010-G-2	CONNECTION TO EXISTING INTAKE 1. CONNECT TO EXISTING SANITARY MANHOLE PER SUDAS 6010 3.05 AS INDICATED ON THE M SHEETS
A-58	6010-II-1	REMOVE MANHOLE
A-59	6010-II-2	REMOVE INTAKE
A-60	7010-A	PAVEMENT, PCC, 4"
A-61	7010-T	PCC PAVEMENT SAMPLES AND TESTING
A-62	7030-A-1	REMOVAL OF SIDEWALK
A-63	7030-A-3	REMOVAL OF DRIVEWAY 1. INCLUDES ALL SAW CUTTING NECESSARY TO CREATE A CLEAN EDGE BETWEEN EXISTING AND PROPOSED SIDEWALKS
A-64	7030-E	SIDEWALK, PCC, 4"
A-65	7030-F	SIDEWALK, PCC, 6" 1. REFER TO S SHEETS FOR SIDEWALK COMPLIANCE.

ESTIMATE REFERENCE INFORMATION

Item No.	Item Code	Description
		2. REFER TO SUDAS DETAIL 7030.205 FOR CURB RAMP SIDEWALK THICKNESSES. 3. 6" SIDEWALK SHALL BE USED THROUGH DRIVEWAYS AND ALLEYS.
A-66	7030-G	DETECTABLE WARNING 1. MATERIAL SHALL BE CAST IRON WITH NATURAL FINISH
A-67	7030-H-1	DRIVEWAY, PAVED, PCC, 6" 1. EXCAVATION AND GRADING FOR DRIVEWAYS IS INCIDENTAL TO THIS ITEM.
A-68	7010-A	FULL DEPTH PATCHES, IMA, 6"
A-69	7010-II	PAVEMENT REMOVAL 1. INCLUDES ALL SAW CUTTING NECESSARY TO CREATE A CLEAN EDGE BETWEEN EXISTING AND PROPOSED SIDEWALKS
A-70	7092-B	REMOVE AND REPLACE CURB AND GUTTER, PCC, 30"
A-71	8020-C	PAINTED PAVEMENT MARKINGS, DURABLE 1. LOCATIONS AS SHOWN ON K SHEETS
A-72	8020-M	GROOVES CUT FOR PAVEMENT MARKINGS 1. GROOVES SHALL BE FOR PERMANENT MARKINGS ONLY IN THE TRAVELED PORTION, NOT THE PARKING AREAS.
A-73	8030-A	TEMPORARY TRAFFIC CONTROL 1. THIS ITEM WILL NOT BE MEASURED. ITEM WILL BE PAID PER LUMP SUM. CONTRACTOR TO NOTIFY CITY 48 HOURS BEFORE ANY CHANGES IN TRAFFIC CONTROL. 2. SAFETY CLOSURES INCIDENTAL TO THIS ITEM.
A-74	9010-A	CONVENTIONAL SEEDING, FERTILIZING, AND MULCHING, TYPE 1
A-75	9040-A-1	SWEEP PREPARATION
A-76	9040-A-2	SWEEP MANAGEMENT
A-77	9040-F-1	WATTLE, 12"
A-78	9040-F-2	WATTLE, REMOVAL 1. REFER TO F SHEETS FOR LOCATIONS. 2. ADDITIONAL QUANTITY PROVIDED TO USE AS DIRECTED BY THE CITY/ ENGINEER
A-79	9040-T-1	INLET PROTECTION DEVICE
A-80	9040-T-2	INLET PROTECTION DEVICE, MAINTENANCE AND REMOVAL 1. FOR ALL STORM SEWER INTAKES. REFER TO F SHEETS FOR LOCATIONS.
A-81	9060-D	REMOVAL AND REINSTALLATION OF CHAIN LINK FENCE
A-82	11010-A	CONSTRUCTION SURVEY
A-83	11020-A	MOBILIZATION 1. THIS ITEM WILL NOT BE MEASURED. THIS ITEM WILL BE PAID PER LUMP SUM.
A-84	11050-A	MAINTENANCE OF POSTAL SERVICE
A-85	11050-B	MAINTENANCE OF SOLID WASTE COLLECTION
A-86	11050-A	CONCRETE WASHOUT
OPTION B	ASPHALT	
B-1	2010-D-3	TOPSOIL OFF-SITE 1. USE TOPSOIL MEETING REQUIREMENTS OF SUDAS, SECTION 2010, 2.01, C. 2. SUITABLE ON-SITE TOPSOIL MAY BE USED. 3. TESTING OF TOPSOIL REQUIRED TO ENSURE REQUIREMENTS ARE MET 4. STRIPPING AND REMOVAL OF EXISTING 8" OF TOPSOIL INCLUDED IN EXCAVATION, CLASS 13 ITEM.
B-2	2010-E	EXCAVATION, CLASS 13 1. INCLUDES 1,106 CY REQUIRED FOR PROPOSED VOLUME OF 6" MODIFIED SUBBASE AND 1,200 CY OF ON-SITE TOPSOIL EXCAVATION. 2. REMOVAL OF SIGNS SHALL BE CONSIDERED INCIDENTAL TO THIS ITEM. ALL SIGNS SHALL BE RETURNED TO CITY OF NEVADA FOR REINSTALLATION.
B-3	2010-G	SUBGRADE PREPARATION 1. COMPACT ACCORDING TO SUDAS, SECTION 2010, 3.05, C.
B-4	2010-I	SUBGRADE TREATMENT, GEOGRID
B-5	2010-J	SUBBASE, MODIFIED 6"
B-6	2010-M	COMPACTION TESTING
B-7	2010-X	EXPLORATORY EXCAVATION 1. MEASUREMENT SHALL BE FOR EACH HOUR OF EXPLORATORY EXCAVATION AS SHOWN ON THE PLANS OR APPROVED BY THE ENGINEER. PAYMENT SHALL BE CONSIDERED FULL COMPENSATION FOR EXPLORATORY EXCAVATION WITH A VACUUM TRENCH OR EXCAVATOR AND SUBSIDIARY LABOR AND MATERIALS. PAYMENT WILL BE MADE TO THE NEAREST ONE HALF HOUR. LOCATING UTILITY LINES SHOWN ON THE PLANS AND AS MARKED BY IOWA ONE CALL WILL NOT BE COVERED UNDER THIS BID ITEM, UNLESS NOTED OTHERWISE ON THE PLANS, THIS WORK WILL BE CONSIDERED INCIDENTAL TO THE MAJOR WORK BEING COMPLETED. 2. ASSUMED FOUR HOURS PER EACH LOCATION IDENTIFIED IN THE PLANS.

PlotDir: pdf_dw_no_level.ctb
 Model: C03
 PlotDate: 1/25/2024 12:45:32 PM
 Last Saved: 1/25/2024

DRAWN BY:	HCM/ CBM	JOB DATE:	2023
APPROVED:	HRG_PM	JOB NUMBER:	2303452
CAD DATE:	1/25/2024	TIME:	12:45:32 PM
CAD FILE:	...ICADISheets\SH2_2303452_C01.dgn		

NO.	DATE	BY	REVISION DESCRIPTION
1	1/23/24	BLM	ADDENDUM #1



2024 STREET IMPROVEMENTS
CITY OF NEVADA, IOWA 2023

ESTIMATE OF QUANTITIES
AND GENERAL INFORMATION

SHEET NO.
C.03

ESTIMATE REFERENCE INFORMATION

Item No.	Item Code	Description
R-8	5010-F	TRENCH COMPACTION TESTING
R-9	4010-A-1	SANITARY SEWER GRAVITY MAIN, TRENCHED, PVC, 10" 1. PIPE SHALL BE SOLID WALL PVC, SDR 26 IN CONFORMANCE WITH SUDAS, SECTION 4010, 2.01, A. 2. BYPASS PUMPING INCIDENTAL TO INSTALLATION OF SANITARY SEWER. 3. TESTING IS INCIDENTAL AND WILL NOT BE PAID SEPARATELY. LOW PRESSURE AIR TESTING NOT REQUIRED. VIDEO INSPECTION PER SUDAS, SECTION 4000, PARAGRAPH 3.02 AND DEFLECTION TESTING AS PER SUDAS, SECTION 4000, PARAGRAPH 3.04 SHALL ALSO BE PERFORMED. 4. TEMPORARY CONNECTIONS TO EXISTING PIPE DUE TO CONSTRUCTION STAGING SHALL BE CONSIDERED INCIDENTAL TO THIS ITEM. 5. SEE MSA.02 FOR EXPLORATORY EXCAVATION TO VERIFY EXISTING SANITARY SEWER SIZE AT BURIED DROP CONNECTION. ASSUMED TO BE 10" BUT MAY BE 8". VERIFY PRIOR TO ORDERING MATERIALS.
D-10	4010-C	SANITARY SEWER SERVICE STUD, PVC, 4"
D-11	4010-E	SANITARY SEWER SERVICE STUD, PVC, 6" 1. QUANTITY IS TAKEN FROM SEWER MAIN TO ROW. 2. INCLUDES REMOVAL OF EXISTING SERVICE LINE. 3. TRENCH SHORING AND Dewatering ARE INCIDENTAL TO THIS ITEM. 4. BYPASS PUMPING MAY BE REQUIRED AND SHALL BE CONSIDERED INCIDENTAL TO THIS ITEM. 5. SANITARY SERVICES ARE SHOWN ON THE DRAWINGS WHERE KNOWN. SERVICE LINE LOCATIONS SHOWN ON THE PLANS ARE UNDERSTOOD TO BE APPROXIMATE. WHERE THESE EXISTING UTILITIES ARE NOT IDENTIFIED, CONTRACTOR SHALL FIELD VERIFY LOCATION AND VERIFY EXISTING SERVICE LINE DIAMETER AND MATCH COORDINATE WITH CITY OF NEVADA.
B-12	4010-H	REMOVAL OF SANITARY SEWER, VCP, 10" 1. REFER TO C SHEETS FOR SANITARY OR STORM SEWER ABANDONMENT OR REMOVAL TABULATION. 2. BYPASS PUMPING INCIDENTAL TO REMOVAL OF SANITARY SEWER.
R-13	4020-A-1	STORM SEWER, TRENCHED, PVC, 8"
D-14	4020-A-1	STORM SEWER, TRENCHED, PVC, 12"
D-15	4020-A-1	STORM SEWER, TRENCHED, RCP, 15"
B-16	4020-A-1	STORM SEWER, TRENCHED, RCP, 18"
B-17	4020-A-1	STORM SEWER, TRENCHED, RCP, 24"
R-18	4020-A-1	STORM SEWER, TRENCHED, RCP, 30" 1. DO NOT USE JOINTING MATERIAL, WRAP ALL JOINTS WITH ENGINEERING FABRIC. 2. FOR PIPES INSTALLED AT BACK OF CURB, BACKFILL WITH GRANULAR BEDDING AND BACK-FILL MATERIAL TO BOTTOM OF SUBBASE MATERIAL. GRANULAR BACKFILL IS INCIDENTAL. 3. FOR ALL OTHER STORM SEWER PIPES BACKFILL WITH GRANULAR BEDDING AND BACKFILL MATERIAL TO A MINIMUM OF 0.5' FROM THE TOP OF PIPE. 4. UTILIZE RUBBER O-RING OR PROFILE GASKET COMPLYING WITH ASTM C 443 AT WATER MAIN CROSSING LOCATIONS AND WHERE STORM SEWER IS BETWEEN 3' AND 10' FROM THE WATER MAIN. 5. CONNECTIONS TO EXISTING PIPE/ STRUCTURES INCIDENTAL TO THIS ITEM. MAINTAIN AND RE-ESTABLISH ALL TIE INS AND EXISTING CONNECTION TO EXISTING STRUCTURES AND PIPES UNLESS INDICATED OTHERWISE IN THE PLANS. 6. TEMPORARY CONNECTIONS TO EXISTING DUE TO CONSTRUCTION STAGING INCIDENTAL TO THIS ITEM.
D-19	4020-D	REMOVAL OF STORM SEWER, PVC, 6"
D-20	4020-D	REMOVAL OF STORM SEWER, PVC, 8"
B-21	4020-D	REMOVAL OF STORM SEWER, VCP, 8"
B-22	4020-D	REMOVAL OF STORM SEWER, VCP, 10"
B-23	4020-D	REMOVAL OF STORM SEWER, VCP, 12"
R-24	4020-D	REMOVAL OF STORM SEWER, RCP, 15"
R-25	4020-D	REMOVAL OF STORM SEWER, VCP, 18"
D-26	4020-G	STORM SEWER ABANDONMENT, FILL AND PLUG 1. REFER TO C SHEETS FOR SANITARY OR STORM SEWER ABANDONMENT OR REMOVAL TABULATION. 2. ABANDONMENT ITEM IS FOR IF STORM SEWER IS ENCOUNTERED DURING EXPLORATORY EXCAVATION. STORM SEWER SIZE ASSUMED TO BE APPROXIMATELY 12" DIA. 3. QUANTITY IS FOR FILLING OF STORM SEWER UNDER PRIVATE PROPERTY ONLY.
R-27	4040-A	SUBDRAIN, TYPE 1, PVC, 6"
D-28	4040-A	FOOTING DRAIN COLLECTOR, PERFORATED PVC, 8" 1. REFER TO SUDAS DETAIL 4040.231 2. THE SUBDRAIN SHALL BE INSTALLED PRIOR TO THE INSTALLATION OF ROADWAY PAVEMENT. 3. REFER TO B SHEETS FOR TYPICAL SECTIONS.
R-29	4040-C	SUBDRAIN CLEANOUT, TYPE A-1, PVC, 6" 1. REFER TO SUDAS DETAIL 4040.232
B-30	4040-D	SUBDRAIN OUTLETS AND CONNECTIONS, PVC, 6" 1. REFER TO SUDAS DETAIL 4040.233
D-31	5010-A-1	WATER MAIN, TRENCHED, PVC, 4"
D-32	5010-A-1	WATER MAIN, TRENCHED, PVC, 6"
B-33	5010-A-1	WATER MAIN, TRENCHED, PVC, 10" 1. PIPE SHALL BE PVC 5000 DR18, UNLESS OTHERWISE NOTED. RESTRAINED JOINT PIPE MAY BE SUBSTITUTED AT NO ADDITIONAL COST 2. ITEM INCLUDES CLEANING, TESTING AND DISINFECTION OF WATER MAINS PER SUDAS 5000 3. CONTRACTOR SHALL NOTIFY AND COORDINATE WITH THE CITY OF NEVADA PRIOR TO FLUSHING AND DISINFECTION. 4. ITEM INCLUDES TRACER WIRE SYSTEM PER SUDAS FIGURE 5010.102 AND FINAL INSPECTION AND ELECTRICAL CONTINUITY VERIFICATION OF TRACER WIRE SYSTEM PER SUDAS SECTION 5010, 3.05 5. INSTALL BEDDING AS CLASS 12 PER SUDAS FIGURE 5010.104 6. ABANDONMENT OF EXISTING WATER MAIN SHALL BE CONSIDERED INCIDENTAL TO THIS ITEM INCLUDING THE ABANDONMENT OF EXISTING VALVES IN PAVEMENT. REMOVE EXISTING VALVE BOX LID AND FILL BOX COMPLETELY WITH LEAN CONCRETE.

ESTIMATE REFERENCE INFORMATION

Item No.	Item Code	Description
R-34	5010-A-2	WATER MAIN, TRENCHLESS, PVC, RESTRAINED JOINT, 8"
R-35	5010-A-2	WATER MAIN, TRENCHLESS, PVC, RESTRAINED JOINT, 10" 1. INSTALL TRENCHLESS WATER MAIN AS SHOWN ON THE MAIN SHEETS 2. RESTRAINED JOINT PIPE SHALL BE CERTA-LOK OR EAGLE-LOK WITH INTEGRAL JOINT RESTRAINT. EXTERNAL MECHANICAL DEVICES FOR JOINT RESTRAINT ARE NOT PERMITTED. 3. PROVIDE ENGINEER WITH TRENCHLESS INSTALLATION PLAN INCLUDING DRILLING EQUIPMENT AND RECEIVING HAMP/ P/LI LOCATION PRIOR TO INSTALLATION. 4. PROVIDE TWO (2) TRACER WIRES. 5. POTHOLES FOR CROSSING UTILITIES AND SERVICES INCIDENTAL TO THIS ITEM. 6. TEMPORARY ADJUSTMENTS FOR EXISTING WATER SERVICES IN CONFLICT WITH INSTALLATION INCIDENTAL TO THIS ITEM.
B-36	5010-C-2	FITTINGS, DUCTILE IRON, MECHANICAL JOINT, BY WEIGHT 1. FITTINGS SHALL BE DUCTILE IRON MECHANICAL JOINT RESTRAINED WITH MEGALUG SERIES 2000PV OR 1100, OR APPROVED EQUAL. 2. ALL FITTING ACCESSORIES NECESSARY FOR A COMPLETE INSTALLATION INCLUDING MEGALUGS ARE INCIDENTAL AND NOT INCLUDED IN THE BID WEIGHT. PAYMENT BY WEIGHT OF FITTINGS INSTALLED, BASED ON ANNA C153 STANDARD FITTING BODY WEIGHTS. 3. POLY WRAP IS REQUIRED AND IS INCIDENTAL. 4. THRUST BLOCKS SHALL BE PROVIDED FOR ALL BENDS AND TEES AND CONSIDERED INCIDENTAL TO THIS ITEM.
R-37	5010-D	WATER SERVICE STUD 1. REFER TO PLAN LOCATIONS IN THE MAIN SHEETS. LOCATIONS ARE APPROXIMATE. CONTRACTOR TO VERIFY. 2. INCLUDES, BUT IS NOT LIMITED TO 1" CORPORATION, 1" CURB STOP, STOP BOX, TRENCH EXCAVATION, Dewatering, FURNISHING BEDDING MATERIAL, INSTALLATION OF TRACER WIRE SYSTEM FOR NON METALLIC SERVICE PIPE, PLACING BEDDING AND BACK-FILL MATERIAL, AND MISCELLANEOUS COUPLINGS AND FITTINGS FOR THE SERVICE PIPE AND TO REDUCE TO THE EXISTING LINE. 3. SERVICE PIPE PAID FOR SEPARATELY BY LENGTH. SEE WATER SERVICE PIPE ITEM. 4. UTILITY FLARED CONNECTIONS. 5. UTILIZE ARCH STYLE CURB STOP BOX 6. CONTACT CITY OF NEVADA WATER DEPARTMENT FOR FURTHER REQUIREMENTS.
B-38	5010-E-1	WATER SERVICE PIPE, COPPER 1" 1. REFER TO PLAN LOCATIONS IN THE MAIN SHEETS. LOCATIONS ARE APPROXIMATE. CONTRACTOR TO VERIFY. 2. WATER SERVICE TO BE INSTALLED AT SIMILAR TIME AND LOCATION AS SANITARY SERVICES. 3. THIS ITEM IS FOR SERVICE PIPE ONLY. SEE WATER SERVICE STUD ITEM FOR OTHER ITEMS
R-39	5020-A	VALVE, GATE, 8"
D-40	5020-A	VALVE, GATE, 10"
D-41	5020-A	VALVE, INSERTION, 4"
B-42	5020-A	VALVE, INSERTION, 6"
B-43	5020-A	VALVE, INSERTION, 8"
B-44	5020-A	VALVE, INSERTION, 10" 1. VALVES SHALL BE DUCTILE IRON MECHANICAL JOINT RESTRAINED WITH MEGALUG SERIES 2000PV, OR APPROVED EQUAL. 2. ITEM INCLUDES ALL VALVE ACCESSORIES NECESSARY FOR A COMPLETE INSTALLATION INCLUDING MEGALUGS. 3. POLY-WRAP IS REQUIRED AND IS INCIDENTAL 4. PROVIDE VALVE BOX ADAPTER II, OR ENGINEER APPROVED EQUIVALENT, FOR ALL VALVE BOXES. 5. INSERTION VALVES TO BE USED AS NEEDED. THIS IS INCLUDED AS A CONTINGENCY ITEM AND SHALL ONLY BE USED IF AUTHORIZED BY THE ENGINEER. THE QUANTITY FOR WHICH PAYMENT WILL BE MADE WILL BE COUNTED PER EACH VALVE INSTALLED.
R-45	5020-C	FIRE HYDRANT ASSEMBLY 1. FIRE HYDRANT SHALL BE CLOW MEDALLION, MULLER CENTURION, OR WATEROUS WD-67-250 2. HYDRANTS SHALL BE PROVIDED WITH 5" STORZ PUMPER NOZZLE AND TWO (2) 2-1/2" HOSE NOZZLES. 3. ITEM INCLUDES ALL MATERIAL AND FITTING ACCESSORIES NECESSARY FOR A COMPLETE INSTALLATION. 4. HYDRANT ASSEMBLY SHALL BE COMPLETELY RESTRAINED WITH RETAINING GLANDS OR WITH ANCHOR PIPE AND COUPLINGS IN ACCORDANCE WITH SUDAS 5020.201.
R-46	5020-E	FIRE HYDRANT ASSEMBLY REMOVAL 1. INCLUDES AUXILIARY VALVE BOX REMOVAL 2. HYDRANTS SHALL BE SALVAGED AND RETURNED TO THE CITY OF NEVADA AT THE CITY'S WATER TREATMENT PLANT: 1231 W LINCOLN HWY NEVADA, JA 50201
R-47	6010-A	SANITARY SEWER MANHOLE, SW-301, 48" 1. REFER TO C SHEETS FOR STORM SEWER TABULATION. 2. REFER TO M SHEETS FOR LOCATION OF MANHOLES. 3. USE 3 PCE CASTING ON ALL MANHOLES IN PAVEMENT SECTIONS. EXTERNAL CHIMNEY SEALS SHALL BE USED FOR MANHOLES NOT IN PAVEMENT. USE STRIKE T/T BARRIER OR EQUAL FOR MANHOLES IN PAVEMENT. 4. MANHOLES SHALL NOT HAVE STEPS.
D-48	6010-A	STORM SEWER MANHOLE, SW-401, 48"
B-49	6010-A	STORM SEWER MANHOLE, SW 401, 60"
B-50	6010-A	STORM SEWER MANHOLE, SW 401, 72" 1. REFER TO C SHEETS FOR STORM SEWER TABULATION. 2. REFER TO M SHEETS FOR LOCATION OF MANHOLES. 3. USE 3 PCE CASTING ON ALL MANHOLES IN PAVEMENT SECTIONS.
D-51	6010-B	STORM SEWER INTAKE, SW-501
B-52	6010-B	STORM SEWER INTAKE, SW 502; MODIFIED
B-53	6010-B	STORM SEWER INTAKE, SW 505
B-54	6010-B	STORM SEWER INTAKE, SW 506
R-55	6010-B	STORM SEWER INTAKE, SW-512, 24"

PlotDir: pdf_low_no_level.plt
 Model: C04
 PlotDate: 1/25/2024 12:45:44 PM

DRAWN BY:	HCM:CBM	JOB DATE:	2023
APPROVED:	HRG_PM	JOB NUMBER:	2303452
CAD DATE:	1/25/2024		12:45:44 PM
CAD FILE:	...ICADISheets\SH2_2303452_C01.dgn		

NO.	DATE	BY	REVISION DESCRIPTION
1	1/23/24	BLM	ADDENDUM #1



2024 STREET IMPROVEMENTS
CITY OF NEVADA, IOWA 2023

ESTIMATE OF QUANTITIES AND GENERAL INFORMATION

SHEET NO.
C.04

100-4A
10-29-02

ESTIMATE REFERENCE INFORMATION

Item No.	Item Code	Description
B-56	6010-F-1	MANHOLE ADJUSTMENT, MINOR 1. ADJUST EXISTING MANHOLE TO MATCH PROPOSED SURFACE ELEVATION
B-57	6010-G-2	CONNECTION TO EXISTING INTAKE 1. CONNECT TO EXISTING SANITARY MANHOLE PER SUDAS 6010 3.05 AS INDICATED ON THE M SHEETS
B-58	6010-H-1	REMOVE MANHOLE
B-59	6010-H-2	REMOVE INTAKE
B-60	7010-E	CURB AND GUTTER, 30"
B-61	7020-B	PAVEMENT, HMA, 8" 1. 1-1/2" HMA SURFACE COURSE, STANDARD TRAFFIC, 1/2" MIX 1-1/2" HMA INTERMEDIATE COURSE, STANDARD TRAFFIC, 1/2" MIX 5" HMA BASE COURSE, STANDARD TRAFFIC, 3/4" MIX PG 58-285 ASPHALT BINDER
B-62	7020-1	HMA PAVEMENT SAMPLES AND TESTING
B-63	7030-A-1	REMOVAL OF SIDEWALK
B-64	7030-A-2	REMOVAL OF DRIVEWAY 1. INCLUDES ALL SAW CUTTING NECESSARY TO CREATE A CLEAN EDGE BETWEEN EXISTING AND PROPOSED SIDEWALKS
B-65	7030-E	SIDEWALK, PCC, 4"
B-66	7030-E	SIDEWALK, PCC, 6" 1. REFER TO 4 SHEETS FOR SIDEWALK COMPITANCE. 2. REFER TO SUDAS DETAIL 7030.205 FOR CURB RAMP SIDEWALK THICKNESSES. 3. 6" SIDEWALK SHALL BE USED THROUGH DRIVEWAYS AND ALLEYS.
B-67	7030-G	DETECTABLE WARNING 1. MATERIAL SHALL BE CAST IRON WITH NATURAL FINISH
B-68	7030-H-1	DRIVEWAY, PAVED, PCC, 6" 1. EXCAVATION AND GRADING FOR DRIVEWAYS IS INCIDENTAL TO THIS ITEM.
B-69	7040-A	HULL DEPTH PATCHES, HMA, 8"
B-70	7040-H	PAVEMENT REMOVAL 1. INCLUDES ALL SAW CUTTING NECESSARY TO CREATE A CLEAN EDGE BETWEEN EXISTING AND PROPOSED SIDEWALKS
B-71	7092-B	REMOVE AND REPLACE CURB AND GUTTER, PCC, 30"
B-72	8020-C	PATINTE PAVEMENT MARKINGS, DURABLE 1. LOCATIONS AS SHOWN ON K SHEETS
B-73	8020-M	GROOVES CUT FOR PAVEMENT MARKINGS 1. GROOVES SHALL BE FOR PERMANENT MARKINGS ONLY IN THE TRAVELED PORTION, NOT THE PARKING AREAS.
B-74	8030-A	TEMPORARY TRAFFIC CONTROL 1. THIS ITEM WILL NOT BE MEASURED. ITEM WILL BE PAID PER LUMP SUM. CONTRACTOR TO NOTIFY CITY 48 HOURS BEFORE ANY CHANGES IN TRAFFIC CONTROL. 2. SAFETY CLOSURES INCIDENTAL TO THIS ITEM.
B-75	9010-A	CONVENTIONAL SEEDING, FERTILIZING, AND MULCHING, TYPE 1
B-76	9040-A-1	SWPPP PREPARATION
B-77	9040-A-2	SWPPP MANAGEMENT
B-78	9040-F-1	WATTLE, 12"
B-79	9040-F-2	WATTLE, REMOVAL 1. REFER TO F SHEETS FOR LOCATIONS. 2. ADDITIONAL QUANTITY PROVIDED TO USE AS DIRECTED BY THE CITY/ ENGINEER
B-80	9040-T-1	INLET PROTECTION DEVICE
B-81	9040-T-2	INLET PROTECTION DEVICE, MAINTENANCE AND REMOVAL 1. FOR ALL STORM SEWER INTAKES. REFER TO F SHEETS FOR LOCATIONS.
B-82	9060-D	REMOVAL AND REINSTALLATION OF CHAIN LINK FENCE
B-83	11010-A	CONSTRUCTION SURVEY
B-84	11020-A	MOBILIZATION 1. THIS ITEM WILL NOT BE MEASURED. THIS ITEM WILL BE PAID PER LUMP SUM.
B-85	11030-A	MAINTENANCE OF POSTAL SERVICE
B-86	11030-B	MAINTENANCE OF SOLID WASTE COLLECTION
B-87	11050-A	CONCRETE WASHOUT

110-08
04-17-18

REMOVAL OF CONCRETE DRIVES

* Not a Bid Item

Location Station	Side	Area SY	Saw Cut* LF	Remarks
302+55.52	RT	30.9		
305+48.81	LT	64.1		
306+34.10	RT	67.5		
306+39.51	LT	16.8		
102+36.60	RI	52.6		ALLEY
102+37.64	LI	30.1		ALLEY
102+58.27	LI	36.5		
102+96.00	RI	61.6		
202+35.28	LI	51.4		ALLEY
202+35.57	RI	27.0		ALLEY
202+58.67	RT	16.1		
205+15.87	RI	57.6		
205+07.74	RI	26.5		ALLEY
205+18.71	LI	91.0		
205+29.24	RI	17.7		
205+98.33	RI	9.8		
402+47.40	LI	47.2		
TOTAL :		617.2		

110-4
MODIFIED

CURB REMOVAL AND REPLACEMENT

Begin Station	End Station	Side	Length FT	Remarks
100+76.45	100+90.02	LT	13.6	
400+81.16	400+90.16	RT	9.0	
402+14.50	402+93.42	LT	78.9	
TOTAL :			101.5	

110-5
10-20-15

SIDEWALK REMOVAL

* Not a bid item

Begin Station	End Station	Area SY	SIDE	Remarks
300+30.92	300+54.16	19.2	LT	
300+34.95	300+40.30	14.5	RI	
300+85.37	301+07.31	22.7	LI	
300+85.79	301+08.02	23.0	RI	
301+60.59	301+70.59	4.5	LI	
301+85.01	301+95.01	4.4	LI	
302+16.19	302+25.21	8.5	LI	
302+09.29	302+79.29	4.4	IT	
302+81.83	302+91.83	4.4	RT	
302+84.79	302+94.79	4.4	IT	
302+99.29	303+09.29	4.4	LT	
302+99.90	303+09.90	7.5	RT	INCLUDES CARRIAGE WALK
303+51.71	303+61.71	4.4	RT	
303+66.97	303+76.97	4.1	LT	
304+04.90	304+26.40	11.5	RI	
304+10.15	304+26.40	7.3	LI	
304+53.52	304+78.34	21.3	LI	
304+53.45	304+80.11	23.2	RI	
305+31.39	305+41.39	4.2	LI	
305+81.71	305+91.71	4.4	LI	
306+03.99	306+14.48	6.2	IT	CARRIAGE WALK
306+10.84	306+26.22	7.2	RT	
306+73.78	306+73.14	15.6	RT	
306+09.74	306+59.73	4.3	IT	
306+66.05	306+70.05	6.5	IT	CARRIAGE WALK
307+18.59	307+28.59	4.6	IT	
100+64.55	101+09.93	30.0	LT	
101+50.94	101+67.03	9.3	RT	CARRIAGE WALK
102+25.34	102+72.31	20.7	LT	
102+23.16	102+50.04	11.9	RT	
103+84.46	104+58.04	40.7	LT	
103+84.46	104+08.41	23.7	RI	
202+22.56	202+48.53	11.3	IT	
202+78.26	202+83.42	5.3	IT	CARRIAGE WALK
202+81.29	202+96.29	6.6	IT	
203+24.65	203+46.12	9.9	LT	CARRIAGE WALK
205+89.74	206+05.02	7.7	LT	
206+35.00	206+50.32	8.3	LT	
207+53.67	207+79.50	21.7	LT	
207+58.79	207+65.27	9.1	RT	
400+26.11	400+35.11	4.0	RI	
400+69.16	400+93.16	10.6	RI	
400+69.92	400+84.49	7.2	RI	CARRIAGE WALK
402+55.63	402+76.51	22.0	LI	
TOTAL :		507.0		

110-1
04-16-13

REMOVAL OF PAVEMENT

Refer to Tabulation 102-5

* Not a Bid Item

Begin Station	End Station	Side	Pavement Type	Area SY	Saw Cut* LF	Remarks
300+06.24	301+12.72	BOTH	PCC/HMA	679.2		
300+12.72	304+83.88	BOTH	PCC/HMA	1308.3		
304+83.88	308+31.05	BOTH	PCC/HMA	1299.9		
100+90.02	103+95.11	BOTH	PCC/HMA	921.4		
200+09.08	203+82.48	BOTH	PCC/HMA	879.2		
204+53.50	207+84.50	BOTH	PCC/HMA	1012.0		
Total				6100.0		

PlotDwg: pdf_dw_no_level.dwg
 Model: C05
 PlotDwg: hrg.dwg
 Last Saved: 1/25/2024

DRAWN BY: HCM/ CBM	JOB DATE: 2023
APPROVED: HRG/ PM	JOB NUMBER: 2303452
CAD DATE: 1/25/2024	12:45:57 PM
CAD FILE: ...ICADISheets\SH2_2303452_C01.dgn	

NO.	DATE	BY	REVISION DESCRIPTION
1	1/23/24	BLM	ADDENDUM #1



2024 STREET IMPROVEMENTS
CITY OF NEVADA, IOWA 2023

ESTIMATE OF QUANTITIES AND GENERAL INFORMATION

SHEET NO.
C.05

SANITARY SEWER

* Bid Item

INTAKES AND UTILITY ACCESSES						PIPES												
No.	Location Station	Type or Standard Road Plan*	RIM / FG	Bottom Well	Notes	Line Number	Intake/Utility Access No.		MATERIAL	Pipe Diameter Inches	Bid Length* Feet	Design Length Feet	Slope %	Flow Lines		Granular Backfill CY	Pipe Plan Sheet No.	Notes
			Elev.	Elev.			From	To						Inlet Elevation	Outlet Elevation			
SAN-1	300+70.28, 1.16' LT	SW-301	1001.12	991.62	48" DIA. MANHOLE	S-1	EXIST	SAN-1	PVC	10	54	54.00	M/E	M/E	993.82			MATCH EXISTING PIPE ELEVATION AT CONNECTION
SAN-2	304+45.08, 0.30' LT	SW-301	1000.17	989.47	48" DIA. MANHOLE	S-2	SAN-1	SAN-2	PVC	10	375	374.79	0.65%	992.50	990.07			
SAN-3	308+14.93, 2.99' RT	EXISTING	996.89		MANHOLE ADJUSTMENT (RASIE BY APPROX. 1.7")	S-3	SAN-2	SAN-3	PVC	10	370	369.86	0.40%	989.97	988.49			CONNECT TO EXISTING PIPE BEFORE EXISTING EXTERNAL DROP CONNECTION
PIPE LENGTH TOTALS (LF):										10" PVC	799							

NOTES:
1. CONNECTION TO EXISTING SANITARY SEWER MAIN TO BE INCIDENTAL.

SANITARY SEWER SERVICES

Number	Location	Type	Pipe Diameter (Inches)	Length of Line (Feet)	Note
9TH STREET					
SS-1	300+70.31 RT	PVC		54	
SS-2	300+77.68 LT	PVC		49	
SS-3	300+79.78 LT	PVC		49	
SS-4	301+65.49 LT	PVC		34	704 9TH ST
SS-5	301+89.89 LT	PVC		34	712 9TH ST
SS-6	302+21.09 LT	PVC		34	712 9TH ST
SS-7	302+29.90 LT	PVC		34	720 9TH ST
SS-8	302+74.20 LT	PVC		34	720 9TH ST
SS-9	302+89.69 LT	PVC		34	728 9TH ST
SS-10	303+04.19 LT	PVC		34	728 9TH ST
SS-11	303+04.19 RT	PVC		36	727 9TH ST
SS-12	303+56.81 RT	PVC		36	914 H AVE
SS-13	303+71.85 LT	PVC		34	738 9TH ST
SS-14	304+13.63 RT	PVC		151	916 H AVE
SS-15	304+58.59 LT	PVC		148	829 H AVE
SS-16	305+36.10 LT	PVC		35	804 9TH ST
SS-17	305+86.42 LT	PVC		35	818 9TH ST
SS-18	306+54.44 LT	PVC		35	824 9TH ST
			TOTAL:	900	

NOTES:
1. FIELD VERIFY AND MATCHING EXISTING SANITARY SEWER SERVICE SIZE AND LOCATION.

PlotDvr: pdf_low_no_level.ctb
Model: C:11
PenTbl: hrg.tbl
Last Saved: 1/18/2024

DRAWN BY: HCM/ CBM	JOB DATE: 2023
APPROVED: HRG_PM	JOB NUMBER: 2303452
CAD DATE: 1/18/2024	9:52:46 AM
CAD FILE: ...ICADISheets\SH2_2303452_C01.dgn	

NO.	DATE	BY	REVISION DESCRIPTION
1	1/23/24	BLM	ADDENDUM #1



2024 STREET IMPROVEMENTS
CITY OF NEVADA, IOWA 2023

ESTIMATE OF QUANTITIES AND GENERAL INFORMATION

SHEET NO.
C.11

HRG-32
MODIFIED

WATER MAIN EXTENSION TABULATION

Number	Start Station	End Station	Type	Pipe Diameter (Inches)	Length of line (feet)	Note
W-1	100+77.47	100+99.54	PVC	10	22.1	
W-2	100+99.54	103+73.32	PVC	10	273.8	TRENCHLESS CONSTRUCTION
W-3	103+73.32	103+99.39	PVC	10	26	
W-4	204+02.41	207+68.83	PVC	10	366.413	
W-5	300+08.01	300+10.95	PVC	4	2.948	
W-6	300+10.95	300+79.48	PVC	8	69.988	
W-7	300+84.46	300+84.48	PVC	4	2.41	
W-8	300+84.48	300+85.40	PVC	8	109.7	
W-9	300+85.40	300+85.42	PVC	4	2.558	
W-10	300+79.48	301+76.37	PVC	8	92.8	
W-11	301+76.37	303+49.29	PVC	8	173	TRENCHLESS CONSTRUCTION
W-12	303+49.29	304+53.61	PVC	8	108.1	
W-13	304+53.61	304+80.04	PVC	10	22.6	
W-14	304+80.04	307+21.43	PVC	10	241.4	TRENCHLESS CONSTRUCTION
W-15	307+21.43	308+55.84	PVC	10	139.7	
W-16	308+55.84	308+58.84	PVC	4	10.807	
W-17	308+58.84	308+61.11	PVC	4	4.76	
W-18	400+10.07	400+11.14	PVC	4	1.075	
W-19	400+13.14	400+66.83	PVC	8	8.925	
W-20	400+66.83	402+65.98	PVC	10	201.592	
W-21	402+65.98	402+65.93	PVC	10	19.626	
W-22	402+65.92	402+88.83	PVC	10	22.883	
W-23	402+88.83	402+92.32	PVC	4	3.492	
				TOTAL 4" DIA. PVC:	30	
				TOTAL 8" DIA. PVC:	390	
				TOTAL 10" DIA. PVC:	821	
				TOTAL 8" DIA. PVC, TRENCHLESS:	173	
				TOTAL 10" DIA. PVC, TRENCHLESS:	515	

HRG-30
MODIFIED

WATER SERVICES

No.	Location Station	Offset	Type	Pipe Diameter (inches)	Length of Line (feet)
WS-1	202+93.82	23.17' LT	COPPER	1"	113.9
WS-2	205+60.68	34.74' RT	COPPER	1"	51.5
WS-3	206+64.48	26.14' RT	COPPER	1"	42.7
WS-4	208+22.65	22.38' RT	COPPER	1"	54.2
WS-5	208+22.28	20.34' LT	COPPER	1"	53.4
WS-6	302+15.87	30.34' LT	COPPER	1"	11.6
WS-7	302+72.75	29.90' LT	COPPER	1"	11.2
WS-8	302+86.83	33.34' RT	COPPER	1"	55.0
WS-9	302+87.15	29.73' LT	COPPER	1"	11.0
WS-10	303+60.15	28.15' RT	COPPER	1"	46.9
WS-11	303+70.20	29.33' LT	COPPER	1"	10.6
WS-12	305+33.64	28.67' LT	COPPER	1"	10.2
WS-13	305+83.63	27.42' LT	COPPER	1"	8.9
WS-14	306+49.40	27.07' LT	COPPER	1"	8.9
WS-15	307+23.59	31.02' LT	COPPER	1"	13.1
SERVICE STUB					503.1

NOTES:
1. FIELD VERIFY AND MATCH EXISTING WATER SERVICE SIZE AND LOCATION.

HRG-34
MODIFIED

WATER FITTING TABULATION

Number	Station	Offset	Type	Weight (Pounds)	Note
WF-1	100+77.47	-27.755	10 IN. DIA. SLEEVE	45	1
WF-2	100+99.54	-27.7	10 IN. DIA. SLEEVE	45	1
WF-3	103+73.32	-27	10 IN. DIA. SLEEVE	45	1
WF-4	103+99.39	-26.9	10 IN. X 10 IN. DIA. TEE	114	1, 4
WF-5	308+55.82	-21.294	10 IN. X 4 IN. DIA. REDUCER	46	1
WF-6	308+58.84	21.294	4 IN. DIA. 90 DEG BEND	25	1, 4, 3
WF-7	308+58.84	13.492	4 IN. X 4 IN. DIA. TEE	32	1, 4
WF-8	308+56.93	13.486	4 IN. DIA. CAP	9	1
WF-9	308+53.96	13.478	4 IN. DIA. CAP	9	1
WF-10	204+02.41	17.452	10 IN. X 10 IN. DIA. TEE	114	1, 4
WF-11	207+68.83	16.164	10 IN. X 10 IN. DIA. TEE	114	1, 4
WF-12	300+08.01	14.104	4 IN. DIA. SLEEVE	15	1
WF-13	300+10.95	-14.129	4 IN. X 8 IN. DIA. REDUCER	30	1
WF-14	300+18.07	-14.207	8 IN. DIA. 45 DEG BEND	46	1, 4, 3
WF-15	300+22.81	-19	8 TN. DIA. 45 DEG BEND	46	1, 4, 3
WF-16	300+84.46	-55.77	4 TN. DIA. SIFTEE	15	1
WF-17	300+84.48	-51.76	4 TN. X 8 TN. DIA. REDUCER	70	1
WF-18	300+84.51	-50.77	8 TN. DIA. 45 DEG BEND	46	1, 4, 3
WF-19	300+89.39	-46.1	8 TN. DIA. 45 DEG BEND	46	1, 4, 3
WF-20	300+89.63	18.304	8 IN. X 8 IN. DIA. CROSS	105	1
WF-21	300+90.18	45.3	8 IN. DIA. 45 DEG BEND	46	1, 4, 3
WF-22	300+85.82	50.199	8 IN. DIA. 45 DEG BEND	46	1, 4, 3
WF-23	300+85.55	52.587	4 IN. X 8 IN. DIA. REDUCER	30	1
WF-24	300+85.42	55.127	4 IN. DIA. SLEEVE	15	1
WF-25	301+76.37	18.7	8 IN. DIA. SLEEVE	31	1
WF-26	303+49.29	18.7	8 IN. DIA. SLEEVE	31	1
WF-27	304+53.61	-18.694	8 IN. X 10 IN. DIA. REDUCER	47	1
WF-28	304+80.04	-18.6	10 IN. DIA. SLEEVE	45	1
WF-29	307+21.43	-18	10 IN. DIA. SLEEVE	45	1
WF-30	307+68.45	-17.046	10 IN. DIA. 45 DEG BEND	70	1, 4, 3
WF-31	307+71.91	-21.294	10 IN. DIA. 45 DEG BEND	70	1, 4, 3
WF-32	400+10.07	-9.853	4 IN. DIA. SLEEVE	15	1
WF-33	400+13.14	-9.841	4 IN. X 8 IN. DIA. REDUCER	30	1
WF-34	400+22.07	-9.809	8 TN. DIA. 45 DEG BEND	46	1, 4, 3
WF-35	400+36.77	-24.381	8 TN. DIA. 45 DEG BEND	46	1, 4, 3
WF-36	400+66.83	-24.271	8 TN. X 10 TN. DIA. REDUCER	47	1
WF-37	400+86.36	-24.199	10 TN. DIA. 45 DEG BEND	70	1, 4, 3
WF-38	400+89.37	27.188	10 IN. DIA. 45 DEG BEND	70	1, 4, 3
WF-39	401+00.46	27.147	10 IN. DIA. 45 DEG BEND	70	1, 4, 3
WF-40	401+03.45	24.136	10 IN. DIA. 45 DEG BEND	70	1, 4, 3
WF-41	402+65.98	-23.541	10 IN. DIA. 90 DEG BEND	83	1, 4, 3
WF-42	402+65.92	-8.894	10 IN. X 10 IN. DIA. TEE	114	1, 4
WF-43	402+65.90	-3.915	10 IN. DIA. SLEEVE	45	1
WF-44	402+88.83	-8.831	10 IN. X 4 IN. DIA. REDUCER	46	1
WF-45	402+92.32	-8.818	4 IN. DIA. SLEEVE	15	1
WF-46	204+25.37	-16.7	10 IN. DIA. 45 DEG BEND	70	1, 4, 2
WF-47	204+33.30	-16.7	10 IN. DIA. 45 DEG BEND	70	1, 4, 2
WF-48	204+38.46	-16.7	10 TN. DIA. 45 DEG BEND	70	1, 4, 2
WF-49	204+46.53	-16.7	10 TN. DIA. 45 DEG BEND	70	1, 4, 2
WF-50	300+88.80	6.2	8 TN. DIA. 45 DEG BEND	46	1, 4, 2
WF-51	300+88.80	8.5	8 TN. DIA. 45 DEG BEND	46	1, 4, 2
WF-52	300+88.80	17.9	8 TN. DIA. 45 DEG BEND	46	1, 4, 2
WF-53	300+88.80	21.2	8 TN. DIA. 45 DEG BEND	46	1, 4, 2
TOTAL FITTINGS, BY WEIGHT, DUCTILE IRON:				2684	

NOTES:
1. PAYMENT BASED ON WEIGHT SHOWN IN TABLE REGARDLESS OF MANUFACTURER
2. VERTICAL BEND.
3. HORIZONTAL BEND.
4. THRUST BLOCKS OR MEGALUG (RETAINER GLAND) REQUIRED.

HRG-31
MODIFIED

FIRE HYDRANTS

Number	Location Station	Offset	Type	Note
HH-1	103+81.10	-18.0		
HH-2	300+17.01	-22.0		
HH-3	304+77.08	-25.0		
HH-4	400+19.05	-19.8		
HH-5	402+79.78	-18.5		
TOTAL:		5.0		

HRG-37
MODIFIED

FIRE HYDRANT REMOVAL

Number	Location Station	Offset	Type	Note
WHR-1	103+98.44	-24.6		
WHR-2	300+21.20	-39.2		
WHR-3	400+93.32	-21.7		
WHR-4	402+76.61	-19.9		
TOTAL:		4.0		

HRG-35
MODIFIED

WATER VALVE TABULATION

Number	Station	Offset	Type	Quantity	Note
WV-1	100+87.91	-27.7	10 TN. GATE VALVE	1	
WV-2	103+95.84	-26.9	10 TN. GATE VALVE	1	
WV-3	308+52.84	21.294	10 IN. GATE VALVE	1	
WV-4	204+05.95	17.443	10 IN. GATE VALVE	1	
WV-5	300+14.01	-14.156	8 IN. GATE VALVE	1	
WV-6	300+89.61	-21.35	8 IN. GATE VALVE	1	
WV-7	300+89.65	-15.9	8 IN. GATE VALVE	1	
WV-8	300+92.70	-18.45	8 IN. GATE VALVE	1	
WV-9	304+49.10	-18.706	8 IN. GATE VALVE	1	
WV-10	304+66.00	-18.66	10 IN. GATE VALVE	1	
WV-11	300+32.00	-21.29	10 IN. GATE VALVE	1	
WV-12	400+16.07	-9.831	8 IN. GATE VALVE	1	
WV-13	400+80.20	-24.222	8 TN. GATE VALVE	1	
WV-14	402+62.28	-23.541	10 TN. GATE VALVE	1	
WV-15	402+65.93	-11.983	10 TN. GATE VALVE	1	
WV-16	402+71.74	-8.893	10 TN. GATE VALVE	1	
TOTAL, 8 TN. GATE VALVE, DTP:				7	
TOTAL, 10 TN. GATE VALVE, DTP:				9	

PlotDir: pdf_dw_no_level.plt
 Modif: C:12
 PenTbl: hrg.tbl
 Last Saved: 1/18/2024

DRAWN BY: HGM/GBM	JOB DATE: 2023
APPROVED: HRG/PM	JOB NUMBER: 2303452
CAD DATE: 1/18/2024	9:52:53 AM
CAD FILE: ...ICADISheets\SHI_2303452_C01.dgn	

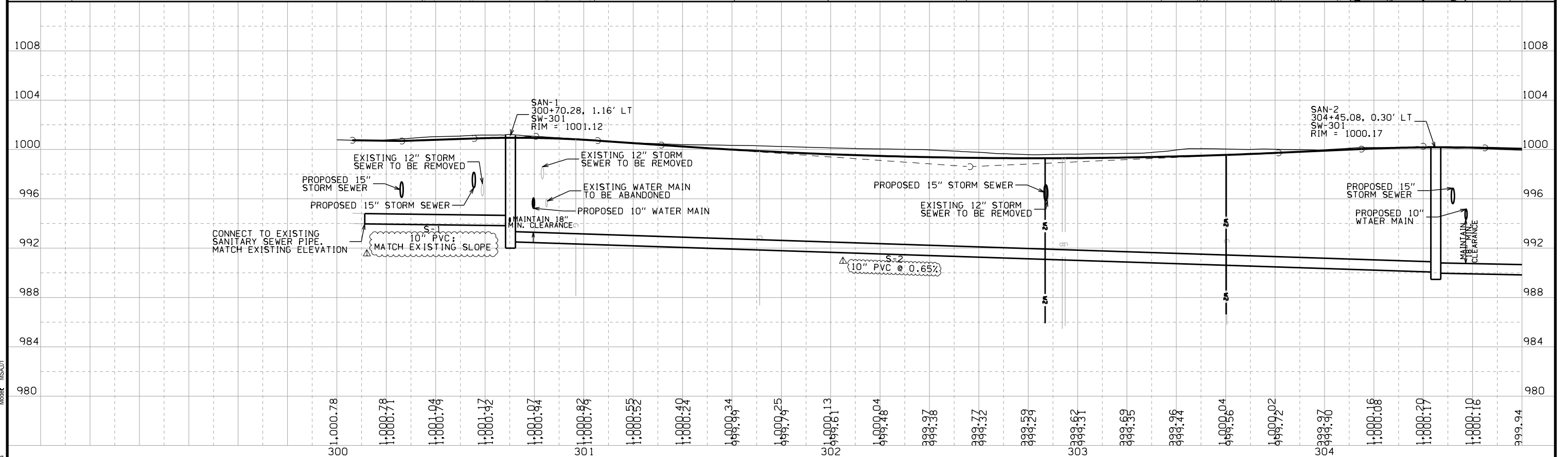
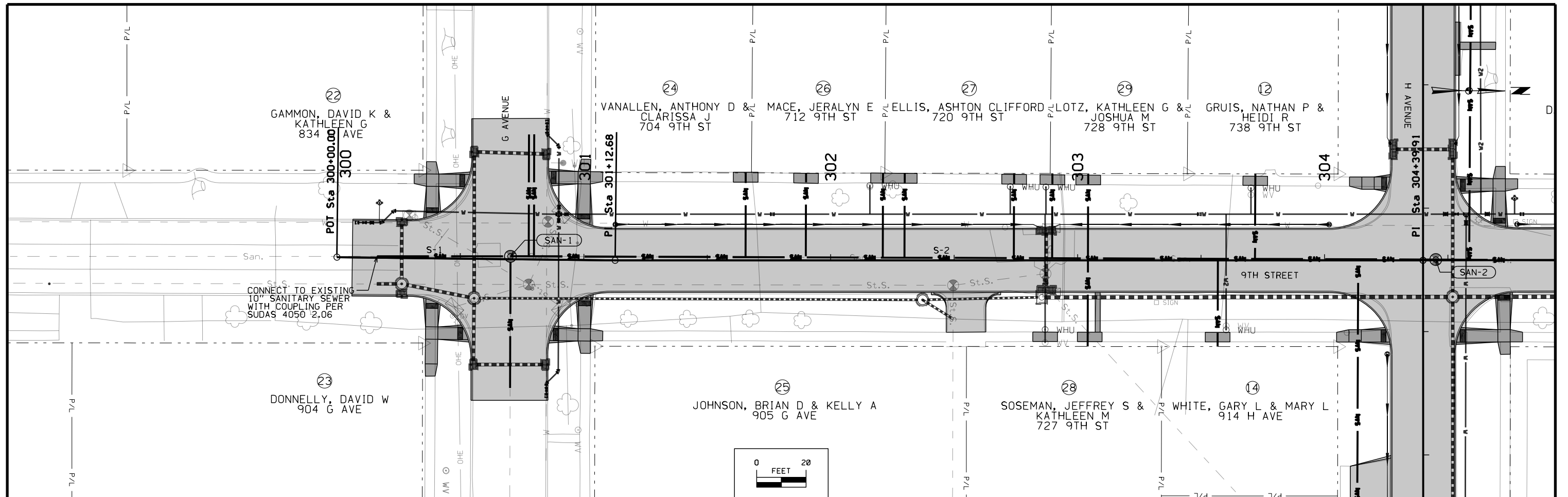
NO.	DATE	BY	REVISION DESCRIPTION
1	1/23/24	BLM	ADDENDUM #1



2024 STREET IMPROVEMENTS
CITY OF NEVADA, IOWA 2023

ESTIMATE OF QUANTITIES
AND GENERAL INFORMATION

SHEET NO.
C.12



Plot Date: 1/17/2024
 File Path: p:\d_w\nc_level\shd\g...
 Model: MSA01

DRAWN BY: HCM/ CBM	JOB DATE: 2023
APPROVED: BLM	JOB NUMBER: 2303452
CAD DATE: 1/17/2024	12:18:02 PM
CAD FILE: ...ISheets\SHHT_2303452_MSA01.dgn	

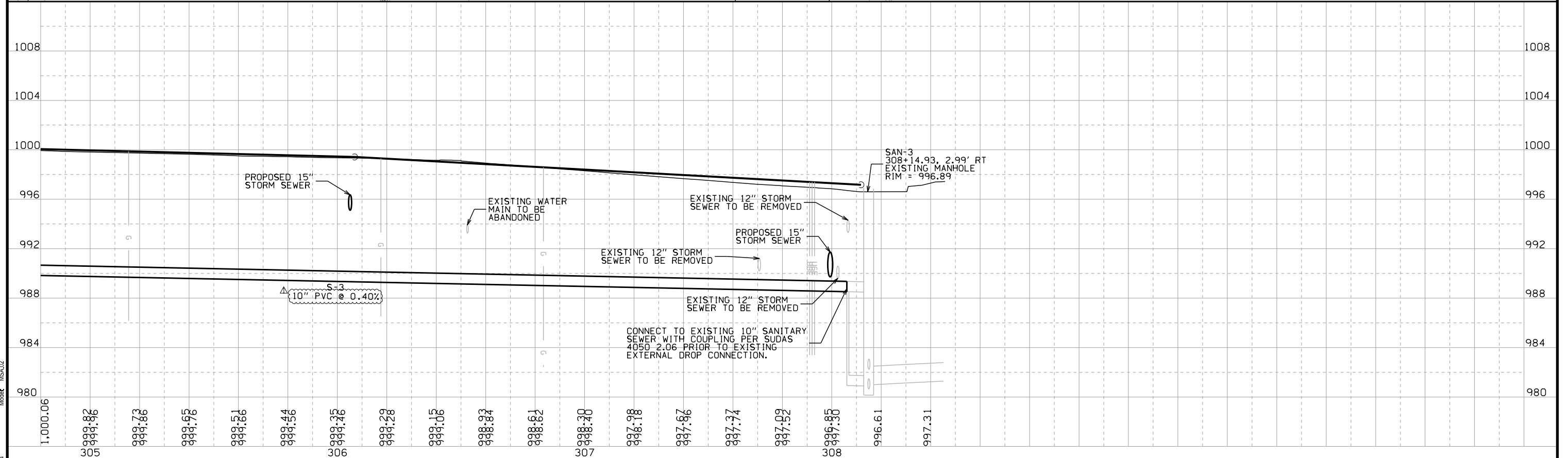
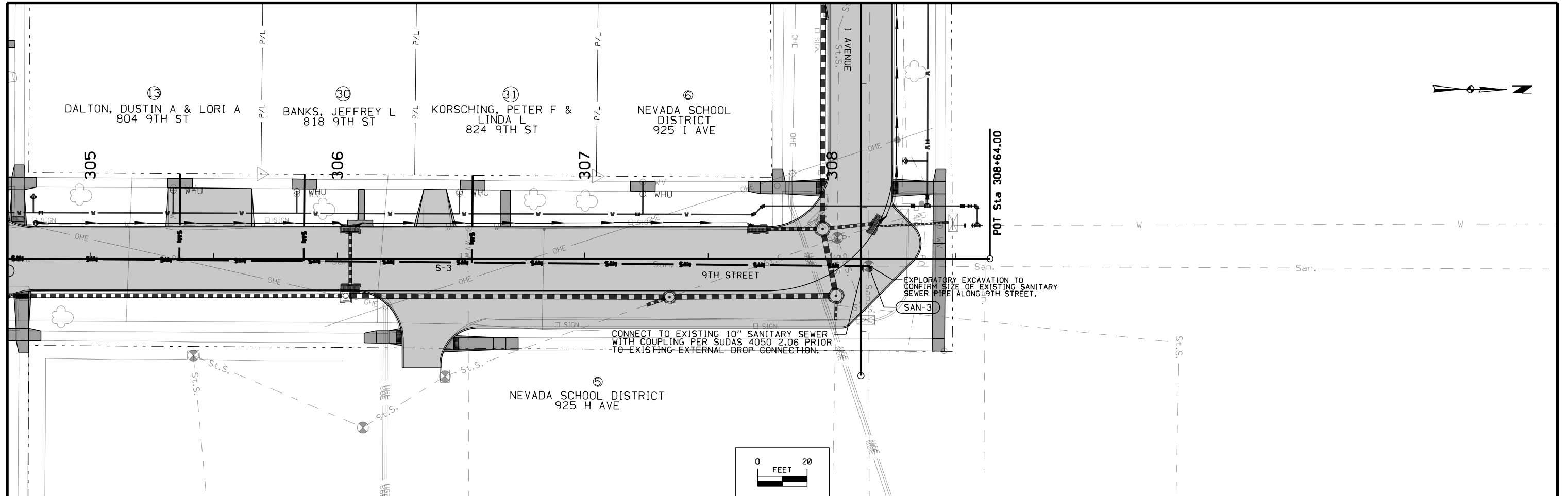
NO.	DATE	BY	REVISION DESCRIPTION
1	1/23/24	BLM	ADDENDUM #1



2024 STREET IMPROVEMENTS
 CITY OF NEVADA, IOWA 2023

9TH STREET
 SANITARY SEWER
 PLAN AND PROFILE

SHEET NO.
MSA.01



Plot Date: 1/17/2024
 Plot Time: 12:18:04 PM
 Plot User: hcm

DRAWN BY:	HCM/ CBM	JOB DATE:	2023
APPROVED:	BLM	JOB NUMBER:	2303452
CAD DATE:	1/17/2024	12:18:04 PM	
CAD FILE:	...ISheets\SH2_2303452_MSA01.dgn		

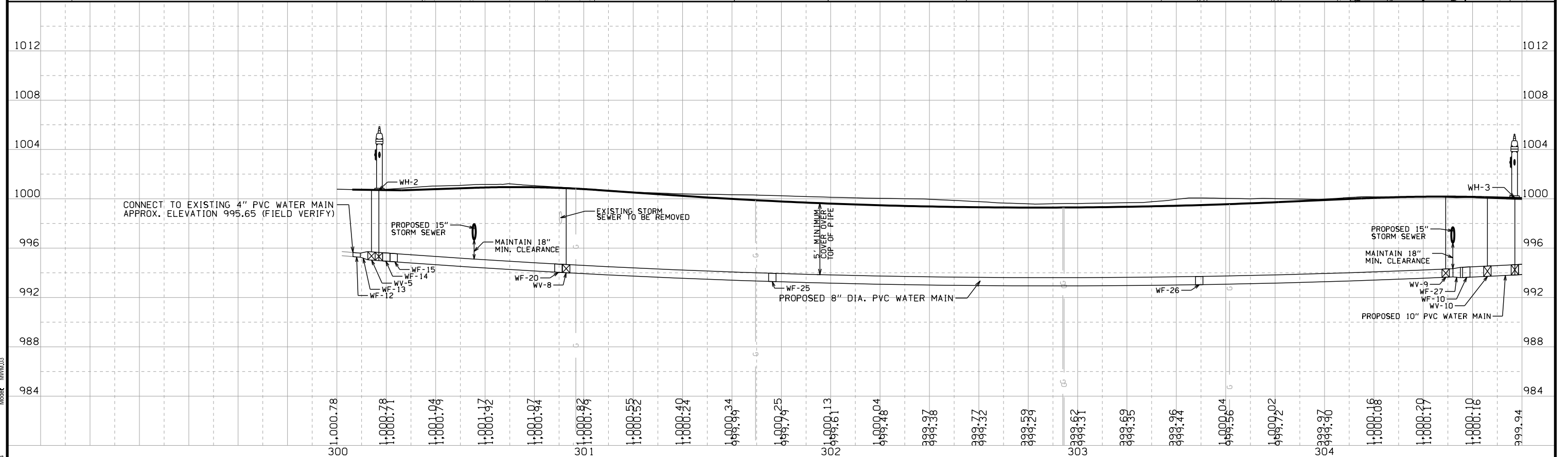
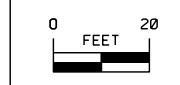
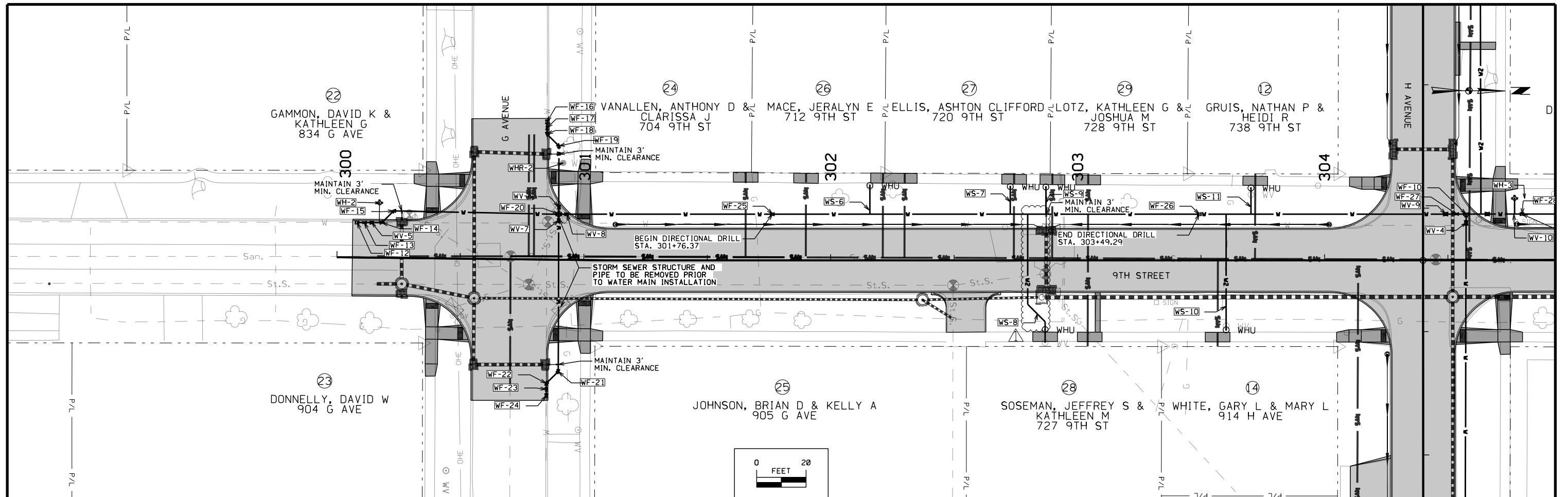
NO.	DATE	BY	REVISION DESCRIPTION
1	1/23/24	BLM	ADDENDUM #1

HRGreen.com
 HRGreen

2024 STREET IMPROVEMENTS
 CITY OF NEVADA, IOWA 2023

9TH STREET
 SANITARY SEWER
 PLAN AND PROFILE

SHEET NO.
MSA.02



Plot Date: 1/18/2024
 File Path: .../Shtets/SHT_2303452_MWM01.dgn
 User: BLM

DRAWN BY:	HCM/BLM	JOB DATE:	2023
APPROVED:	BLM	JOB NUMBER:	2303452
CAD DATE:	1/18/2024	9:55:08 AM	
CAD FILE:	.../Shtets/SHT_2303452_MWM01.dgn		

NO.	DATE	BY	REVISION DESCRIPTION
1	1/23/24	BLM	ADDENDUM #1



2024 STREET IMPROVEMENTS
CITY OF NEVADA, IOWA 2023

9TH STREET
WATER MAIN
PLAN AND PROFILE

SHEET NO.
MWM.03